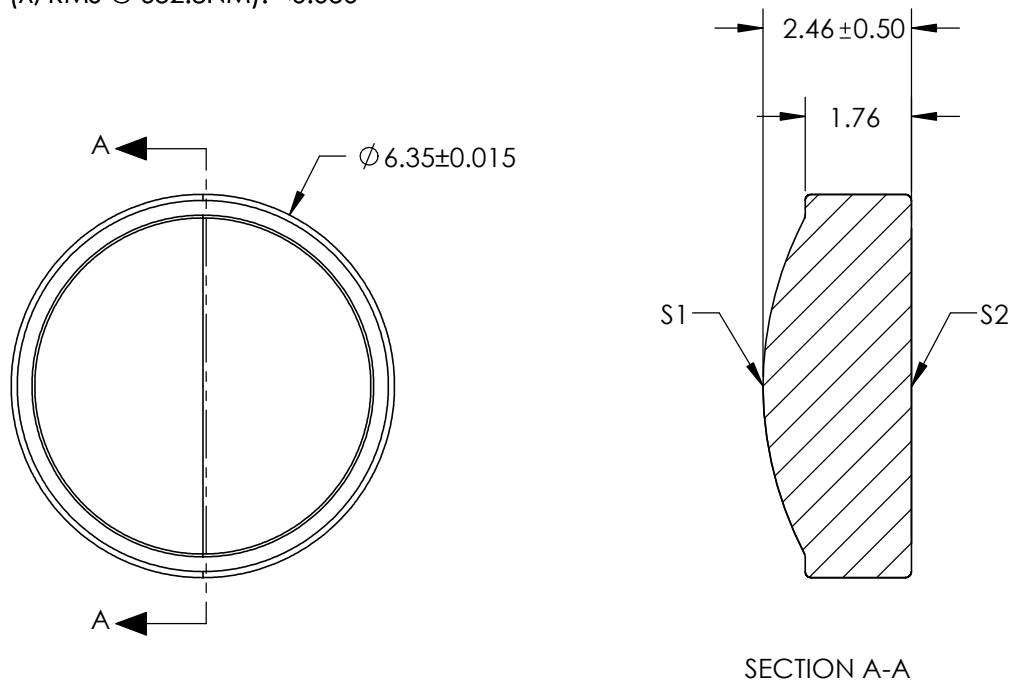

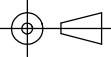


- NOTES:
- 1. SUBSTRATE:
D-ZK3
 - 2. NUMERICAL APERTURE: 0.27
 - 3. COATING
S1 & S2: R(AVG) ≤0.5% @ 350 - 700nm
 - 4. FOCAL LENGTH TOLERANCE: ±1%
 - 5. TRANSMITTED WAVEFRONT ERROR (λ, RMS @ 632.8NM): <0.050
 - 6. DESIGN WAVELENGTH: 650NM



**FOR INFORMATION ONLY:
DO NOT MANUFACTURE
PARTS TO THIS DRAWING**

SPECIFICATIONS SUBJECT TO CHANGE WITHOUT NOTICE
DIMENSIONS ARE FOR REFERENCE ONLY

| | | | | | | | |
|-----------------|---------------------|---------------------|---|------|---|---|--------------|
| | S1 | S2 | EFL | 9.85 |  Edmund Optics® | | |
| | | | WD | 8.40 | | | |
| SHAPE | CONVEX | PLANO |  | | TITLE | LightPath 354306 6.35mm Dia., 0.27 NA, BBAR (350-700nm), Molded Aspheric Lens | |
| SURFACE QUALITY | 40-20 | 40-20 | | | | | |
| CLEAR APERTURE | Ø 5.20 | Ø 4.57 | ALL DIMS IN | mm | DWG NO | 16685 | SHEET 1 OF 1 |
| BEVEL | PROTECTED AS NEEDED | PROTECTED AS NEEDED | | | | | |