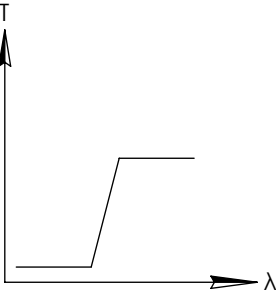
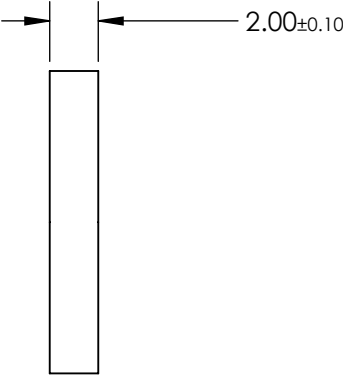
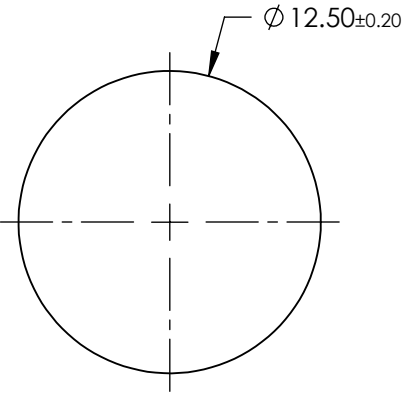
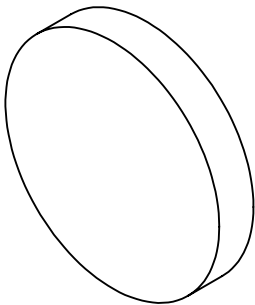


NOTES:

- 1. SUBSTRATE: SCHOTT RG850
- 2. SURFACE S2 TO BE PARALLEL TO SURFACE S1 TO WITHIN 3 ARCMIN

FOR INFORMATION ONLY:
DO NOT MANUFACTURE
PARTS TO THIS DRAWING



LONGPASS FILTER

SPECIFICATIONS SUBJECT TO CHANGE WITHOUT NOTICE
DIMENSIONS ARE FOR REFERENCE ONLY

| REV. A | VALUE |
|--|----------------------|
| SHAPE | PLANO |
| SPECTRAL TRANSMITTANCE $\tau_{ip}(\%)$ | 97 |
| PASSBAND LIMIT λ_{p1} (nm) | 1200 |
| CUT-OFF POSITION λ_c (nm) | 850±9 |
| STOPBAND LIMIT λ_s (nm) | 700 |
| WAVELENGTH | IR |
| BEVEL | PROTECTIVE AS NEEDED |



ALL DIMS IN

mm

TITLE

SCHOTT RG850, 12.5mm DIA., 2mm THICK,
COLORED GLASS LONGPASS FILTER

DWG NO

16455

SHEET
1 OF 1