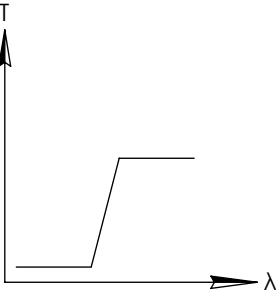
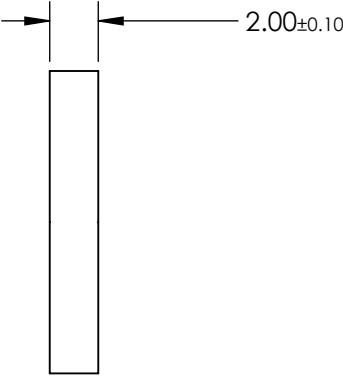
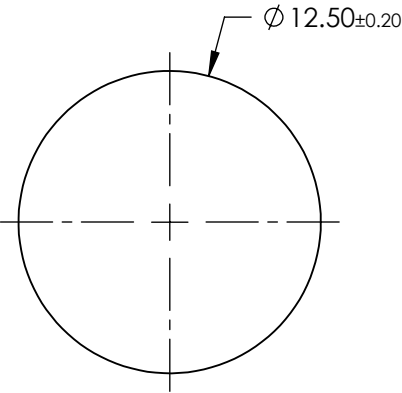
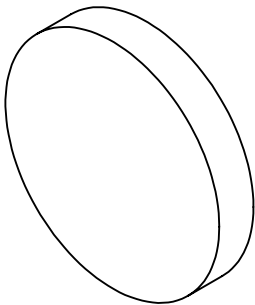


NOTES:

- 1. SUBSTRATE: SCHOTT RG715
- 2. SURFACE S2 TO BE PARALLEL TO SURFACE S1 TO WITHIN 3 ARCMIN

FOR INFORMATION ONLY:
DO NOT MANUFACTURE
PARTS TO THIS DRAWING



LONGPASS FILTER

SPECIFICATIONS SUBJECT TO CHANGE WITHOUT NOTICE
DIMENSIONS ARE FOR REFERENCE ONLY

REV. A	VALUE
SHAPE	PLANO
SPECTRAL TRANSMITTANCE $\tau_{ip}(\%)$	96
PASSBAND LIMIT λ_{p1} (nm)	810
CUT-OFF POSITION λ_c (nm)	715±9
STOPBAND LIMIT λ_s (nm)	620
WAVELENGTH	IR
BEVEL	PROTECTIVE AS NEEDED



ALL DIMS IN

mm

TITLE

SCHOTT RG715, 12.5mm DIA., 2mm THICK,
COLORED GLASS LONGPASS FILTER

DWG NO

16451

SHEET
1 OF 1