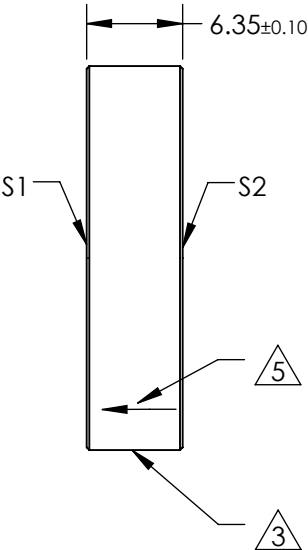
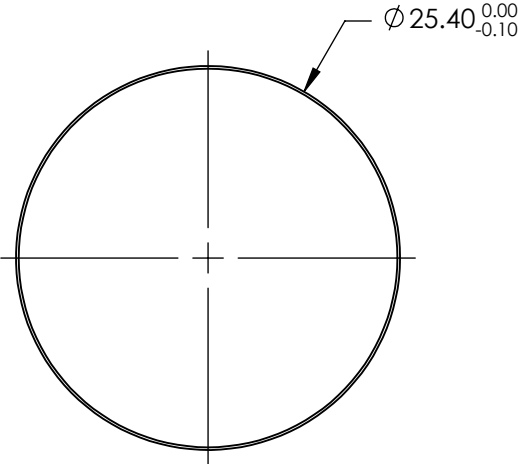


NOTES:

- 1. SUBSTRATE
FUSED SILICA (CORNING 7980 0F)
- 2. COATING (APPLY ACROSS CLEAR APERTURE)
S1: Rs >99.99% @ 1064nm @ 45° AOI
Tp >98% @ 1064nm @ 45° AOI
S2: Rp <0.05% @ 1064nm @ 45° AOI

EXTINCTION RATIO: 10000:1

- 3 FINE GROUND SURFACE
- 4. POWER, IRREGULARITY, SURFACE QUALITY, AND COATING SPECIFICATIONS APPLY ACROSS CLEAR APERTURE
- 5 APPLY ARROW ON EDGE WITH PENCIL OR PERMANENT INK TOWARDS S1
- 6. DESIGN WAVELENGTH: 1064nm
- 7. RoHS: COMPLIANT




**FOR INFORMATION ONLY:
DO NOT MANUFACTURE
PARTS TO THIS DRAWING**

SPECIFICATIONS SUBJECT TO CHANGE WITHOUT NOTICE
DIMENSIONS ARE FOR REFERENCE ONLY

	S1	S2
TRANSMITTED WAVEFRONT	λ/8 @ 632.8nm OVER CA	λ/8 @ 632.8nm OVER CA
ANGLE OF INCIDENCE (°)	45	45
SHAPE	PLANO	PLANO
SURFACE QUALITY	10-5	10-5
CLEAR APERTURE	Ø20.00	Ø20.00
BEVEL	PROTECTIVE AS NEEDED	PROTECTIVE AS NEEDED

THIRD ANGLE
PROJECTION

ALL DIMS IN mm

 **Edmund Optics®**

TITLE

1064nm, 25.4mm DIA., 45° AOI, HIGH CONTRAST THIN FILM POLARIZER

DWG NO

16747

SHEET
1 OF 1