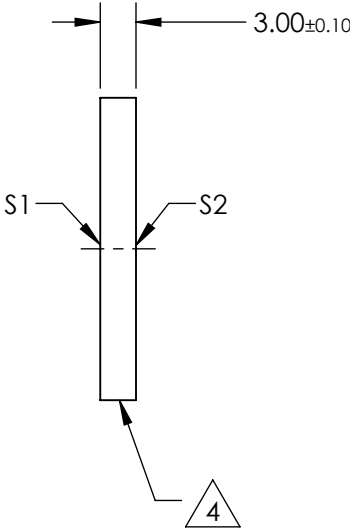
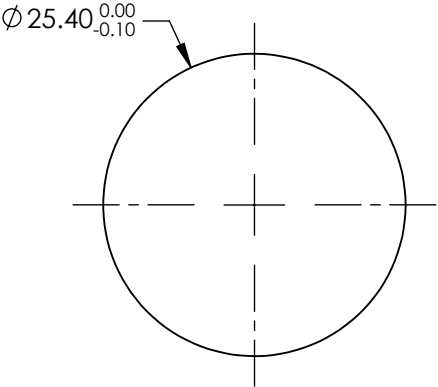
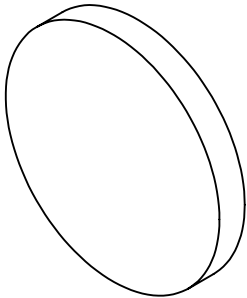


NOTES:


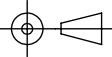
- 1. SUBSTRATE:
VACUUM UV GRADE CaF2
- 2. SURFACE S2 TO BE PARALLEL WITH S1 TO < 1 ARCMIN
- 3. COATING (APPLY ACROSS CLEAR APERTURE)
S1 & S2: R(AVG) ≤ 1.5% FROM 250-700nm @ 0° AOI
R(ABS) ≤ 1.0% FROM 350-450nm @ 0° AOI

4. FINE GRIND SURFACE



**FOR INFORMATION ONLY:
DO NOT MANUFACTURE
PARTS TO THIS DRAWING**

SPECIFICATIONS SUBJECT TO CHANGE WITHOUT NOTICE
DIMENSIONS ARE FOR REFERENCE ONLY

	S1	S2	 Edmund Optics®			
SHAPE	PLANO	PLANO		TITLE	25.4mm Dia., 3mm Thick, UV-VIS Coated, Calcium Fluoride Window	
SURFACE FLATNESS	$\lambda/2$	$\lambda/2$		DWG NO	14806	SHEET 1 OF 1
SURFACE QUALITY	40-20	40-20				
CLEAR APERTURE	Ø22.86	Ø22.86				
BEVEL	PROTECTIVE AS NEEDED	PROTECTIVE AS NEEDED	ALL DIMS IN	mm		