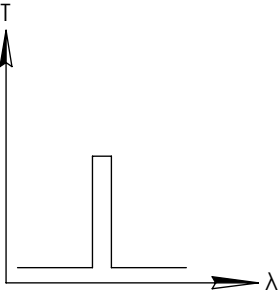
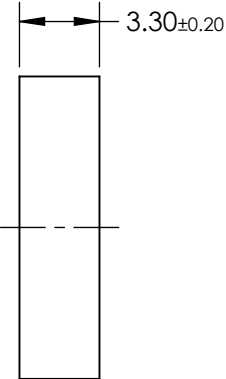
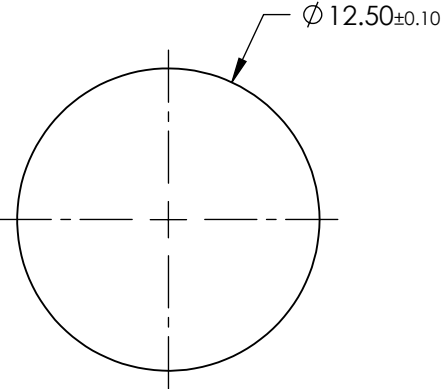
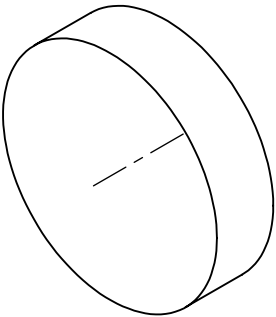


**FOR INFORMATION ONLY:
DO NOT MANUFACTURE
PARTS TO THIS DRAWING**



BANDPASS FILTER

	VALUE
CENTER WAVELENGTH (CWL)	1550 ± 5nm
FULL WIDTH HALF MAX (FWHM)	50.0 ± 5nm
MINIMUM TRANSMISSION	≥90%
BLOCKING	200 - 1800nm
CLEAR APERTURE (mm)	Ø11.25
SURFACE QUALITY	80-50
COATING TYPE	HARD COATED
DURABILITY	MIL-C-48497A, SECTION 3.4.1
ENVIRONMENTAL	MIL-STD-810F, SECTION 507.4

SPECIFICATIONS SUBJECT TO CHANGE WITHOUT NOTICE
DIMENSIONS ARE FOR REFERENCE ONLY

EO[®] Edmund Optics[®]

THIRD ANGLE PROJECTION		TITLE	1550nm CWL, 12.5mm DIA., HARD COATED OD 4.0 50nm UNMOUNTED BANDPASS FILTER	
		DWG NO	15163	SHEET 1 OF 1