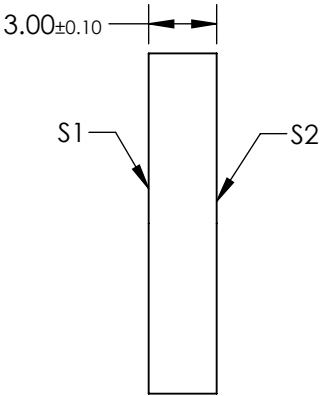
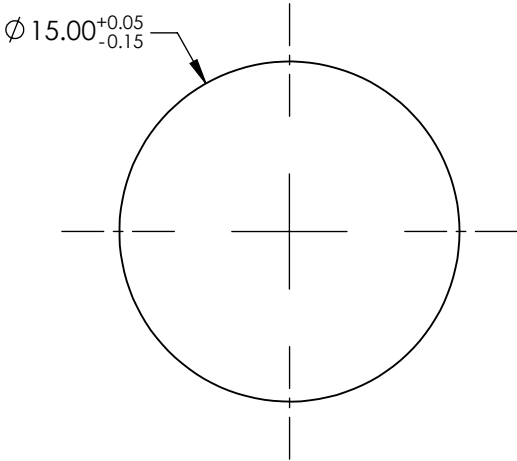


NOTES:

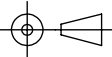
- 1. SUBSTRATE: FUSED SILICA
- 2. BEAM MODE: SM OR MM
- 3. OVERALL EFFICIENCY: 77%
- 4. FULL ANGLE(°): 5.27
- 5. COATING:  
Laser V-Coat (1064nm)
- 6. BEAM SPECIFICATION:  
MINIMUM BEAM DIAMETER: 5mm  
OUTPUT SHAPE: ROUND



**FOR INFORMATION ONLY:  
DO NOT MANUFACTURE  
PARTS TO THIS DRAWING**

SPECIFICATIONS SUBJECT TO CHANGE WITHOUT NOTICE  
DIMENSIONS ARE FOR REFERENCE ONLY



	S1	S2	<div>THIRD ANGLE PROJECTION</div> 		TITLE 1064nm, 15mm DIA., ROUND OUTPUT, DIFFRACTIVE DIFFUSER	
SHAPE	PLANO	PLANO				
MIN CLEAR APERTURE	Ø13.00	Ø13.00	ALL DIMS IN mm		DWG NO 14682	SHEET 1 OF 1
BEVEL MAX FACE	PROTECTIVE AS NEEDED	PROTECTIVE AS NEEDED				