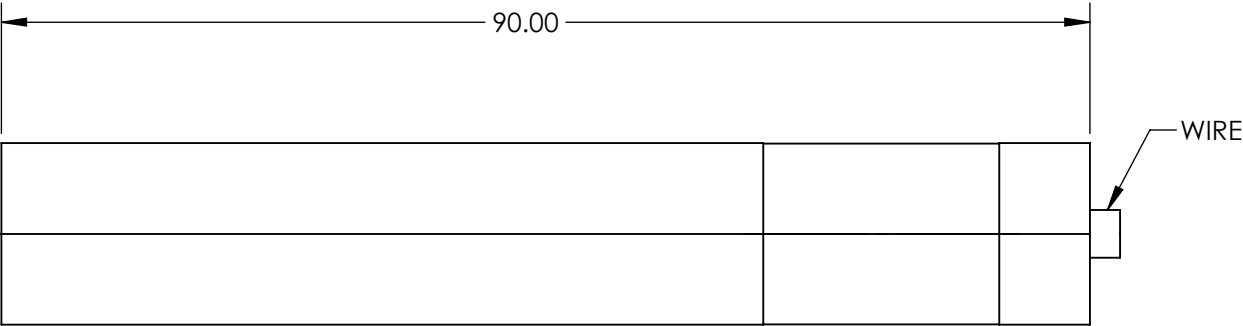
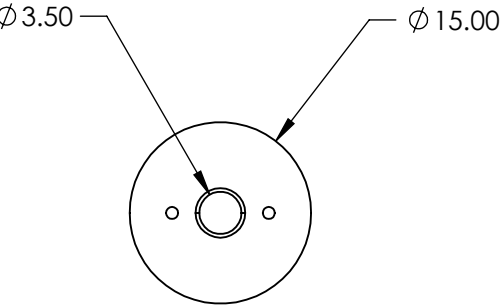
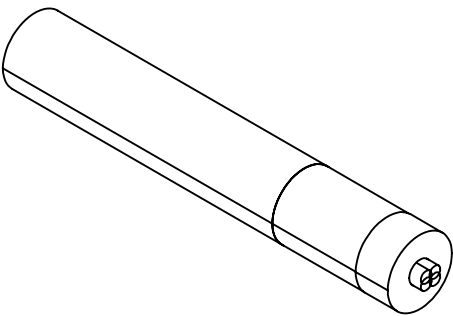


NOTES:

- 1. LASER CLASS: IIIb  
SPATIAL MODE: TEM00
- 2. BEAM DIAMETER(mm): 1.0 Typical  
BEAM DIVERGENCE(mrad): <1 Typical
- 3. MODULATION FREQUENCY: 0 - 10 kHz
- 4. OPERATING TEMPERATURE: 15 to 35 °C  
OPERATING VOLTAGE: 5.0 V
- 5. OUTPUT POWER: 5 mW
- 6. WAVELENGTH RANGE: 532 ±1 nm



SPECIFICATIONS SUBJECT TO CHANGE WITHOUT NOTICE  
DIMENSIONS ARE FOR REFERENCE ONLY

**FOR INFORMATION ONLY:  
DO NOT MANUFACTURE  
PARTS TO THIS DRAWING**

**EO<sup>®</sup> Edmund Optics<sup>®</sup>**

THIRD ANGLE PROJECTION		TITLE		5mW, 532nm Fixed Focus DPSS Alignment Laser	
ALL DIMS IN	mm	DWG NO	37027	SHEET 1 OF 1	