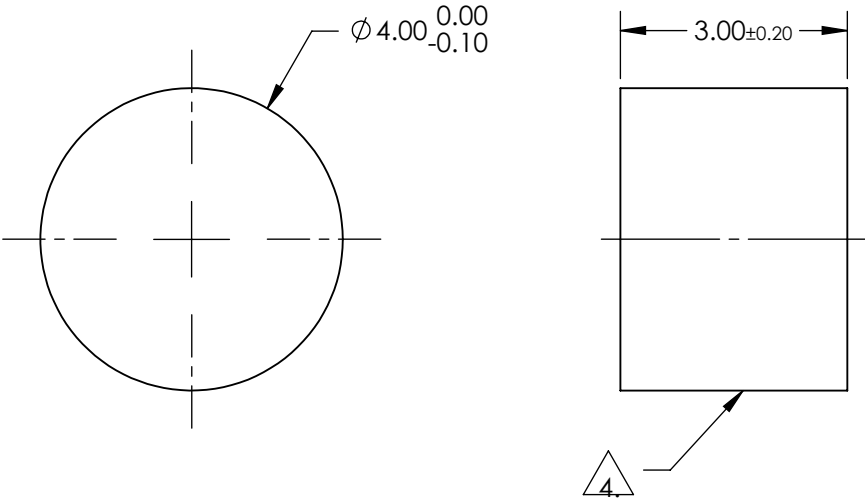



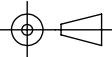
NOTES:

1. SUBSTRATE:  
FUSED SILICA
2. SURFACE S2 TO BE PARALLEL TO SURFACE S1 TO WITHIN <3 ARCMIN
3. COATING (APPLY ACROSS COATING APERTURE)  
S1: STANDARD HR  
R (ABS) > 99.8% @ 355nm @ 0-45° AOI  
  
DAMAGE THRESHOLD,  
PULSED: 5 J/cm², 20ns, 20 Hz @ 355nm  
  
S2: NONE
4. FINE GROUND SURFACE
5. POWER, IRREGULARITY, SURFACE QUALITY, AND COATING SPECIFICATIONS  
APPLY ACROSS CLEAR APERTURE
6. ROHS COMPLIANT



**FOR INFORMATION ONLY:  
DO NOT MANUFACTURE  
PARTS TO THIS DRAWING**

SPECIFICATIONS SUBJECT TO CHANGE WITHOUT NOTICE  
DIMENSIONS ARE FOR REFERENCE ONLY

	S1	S2	 Edmund Optics®			
SHAPE	PLANO	PLANO				
SURFACE FLATNESS	0.10 WAVE	N/A		TITLE	4mm Dia. 355nm 0-45°, Nd:YAG Laser Line Mirror	
SURFACE QUALITY	10-5	COMMERCIAL POLISH		DWG NO	12625	SHEET 1 OF 1
CLEAR APERTURE	90%	N/A				
BEVEL	PROTECTIVE AS NEEDED	PROTECTIVE AS NEEDED				
			ALL DIMS IN	mm		