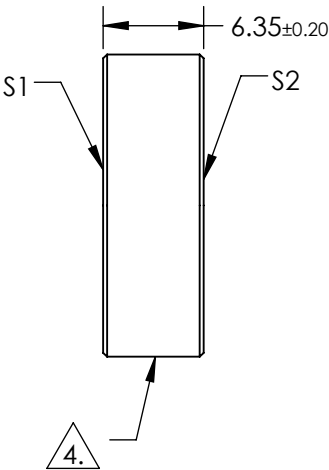
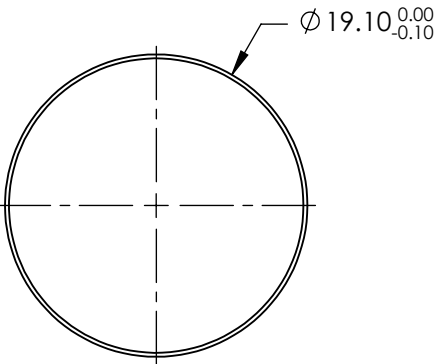


NOTES:

- 1. SUBSTRATE:
FUSED SILICA
- 2. S2 TO BE PARALLEL TO S1 TO WITHIN <3 ARCMINS
- 3. COATING (APPLY ACROSS COATING APERTURE)
S1: NONE
S2: NONE

4. FINE GROUND SURFACE

- 5. CLEAR APERTURE AND COATING APERTURE ARE CENTERED ON SURFACE
- 6. POWER, IRREGULARITY, AND SURFACE QUALITY SPECIFICATIONS APPLY
ACROSS CLEAR APERTURE
- 7. ROHS COMPLIANT



**FOR INFORMATION ONLY:
DO NOT MANUFACTURE
PARTS TO THIS DRAWING**

SPECIFICATIONS SUBJECT TO CHANGE WITHOUT NOTICE
DIMENSIONS ARE FOR REFERENCE ONLY

	S1	S2
SHAPE	PLANO	PLANO
SURFACE QUALITY	10-5	10-5
SURFACE FLATNESS	$\lambda/10$	$\lambda/10$
MIN CLEAR APERTURE	Ø17.19	Ø17.19
BEVEL	PROTECTIVE AS NEEDED	PROTECTIVE AS NEEDED

THIRD ANGLE PROJECTION	
ALL DIMS IN	mm

Edmund Optics®

TITLE	Ø19.1mm x 6.35mm UNCOATED FS LASER WINDOW SUBSTRATE		
DWG NO	38911	SHEET 1 OF 1	