

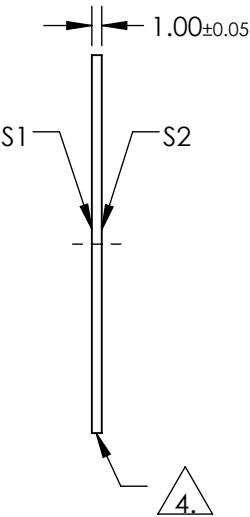
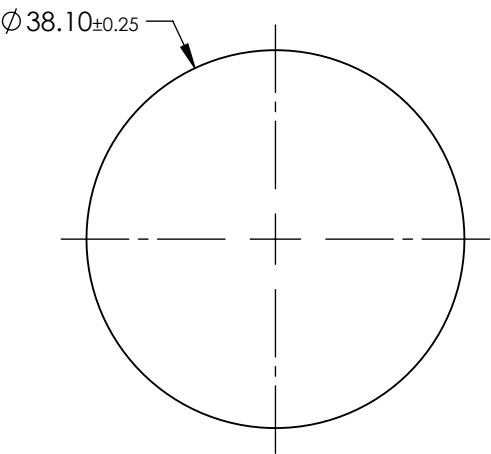
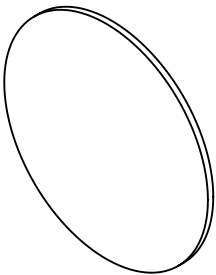
NOTES:

- 1. SUBSTRATE: OPTICAL GRADE SAPPHIRE (Al₂O₃)
- 2. SURFACE S2 TO BE PARALLEL TO SURFACE S1 TO WITHIN <3.5 ARCMIN
- 3. COATING (APPLY ACROSS COATING APERTURE):

S1 & S2: R(ABS) ≤ 0.25% @ 880nm
R(AVG) ≤ 1.25% from 400 - 870nm
R(AVG) ≤ 1.25% from 890 - 1000nm

4. GRIND SURFACE

5. RoHS: COMPLIANT



**FOR INFORMATION ONLY:
DO NOT MANUFACTURE
PARTS TO THIS DRAWING**

SPECIFICATIONS SUBJECT TO CHANGE WITHOUT NOTICE
DIMENSIONS ARE FOR REFERENCE ONLY

	S1	S2
SHAPE	PLANO	PLANO
SURFACE QUALITY	80-50	80-50
SURFACE FLATNESS @ 632.8nm	2λ	2λ
SURFACE ROUGHNESS (μm/in)	0.1	0.1
BIREFRINGENCE	0.008	0.008
CLEAR APERTURE	Ø34.29	Ø34.29
BEVEL	PROTECTIVE AS NEEDED	PROTECTIVE AS NEEDED

THIRD ANGLE PROJECTION

ALL DIMS IN mm

 Edmund Optics®			
TITLE	Window Saph 38.1 Dia VIS-NIR Ctd		
DWG NO	39251	SHEET 1 OF 1	