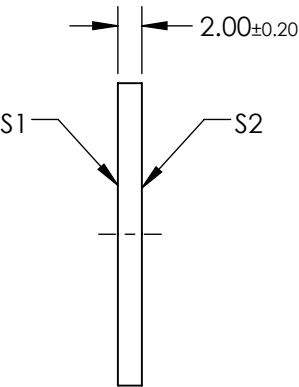
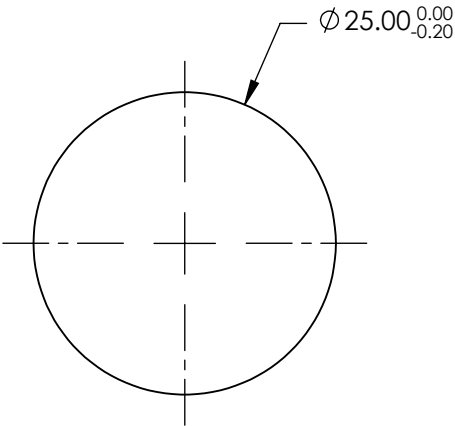


NOTES:

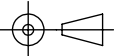
- 1. SUBSTRATE:  
B270
- 2. SURFACE S2 TO BE PARALLEL TO SURFACE S1 TO WITHIN <3 ARCMIN
- 3. COATING (APPLY ACROSS COATING APERTURE)  
S1 & S2: R(AVG) < 0.5% @ 400 - 700nm
- 4. RETARDANCE:  $\lambda/4 \pm 10\text{nm}$  @ 650nm
- 5. DESIGN WAVELENGTH: 650nm
- 6. CONSTRUCTION: Birefringent Polymer Stack
- 7. ROHS: COMPLIANT



SPECIFICATIONS SUBJECT TO CHANGE WITHOUT NOTICE  
DIMENSIONS ARE FOR REFERENCE ONLY

**FOR INFORMATION ONLY:  
DO NOT MANUFACTURE  
PARTS TO THIS DRAWING**

**EO<sup>®</sup> Edmund Optics<sup>®</sup>**

THIRD ANGLE PROJECTION 		TITLE	650nm, $\lambda/4$ Polymer Waveplate	
ALL DIMS IN	mm	DWG NO	91014	SHEET 1 OF 1