

1. SUBSTRATE:

2. COATING (APPLY ACROSS COATING APERTURE)

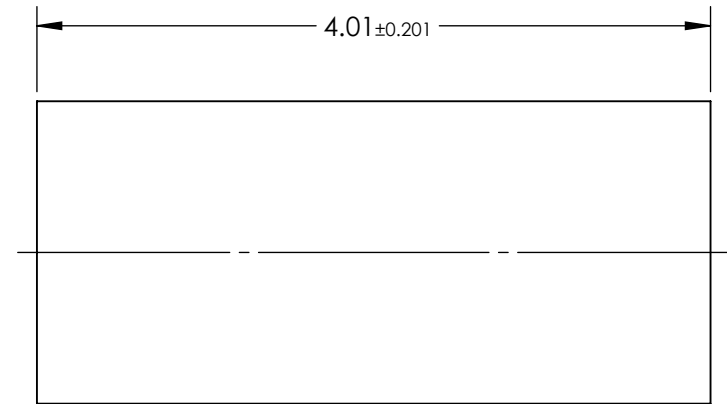
3. EFL: 1.75

4. $f/\# : 0.97$

5. NUMERICAL APERTURE: 0.51


6. DESIGN WAVELENGTH: 1550nm

7. WORKING DISTANCE: 0.23mm



SPECIFICATIONS SUBJECT TO CHANGE WITHOUT NOTICE
DIMENSIONS ARE FOR REFERENCE ONLY



	S1	S2	THIRD ANGLE PROJECTION 		TITLE 1.8mm Dia, 1550nm DWL, 0.23mm WD, Uncoated, GRIN Lens		
SHAPE	PLANO	PLANO					
SURFACE QUALITY	40-20	40-20					
CLEAR APERTURE	Ø1.62	Ø1.62	ALL DIMS IN	mm	DWG NO	64532	SHEET 1 OF 1