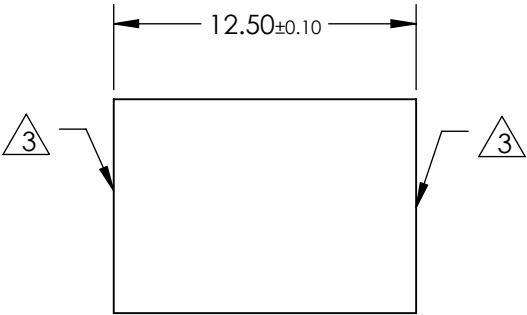
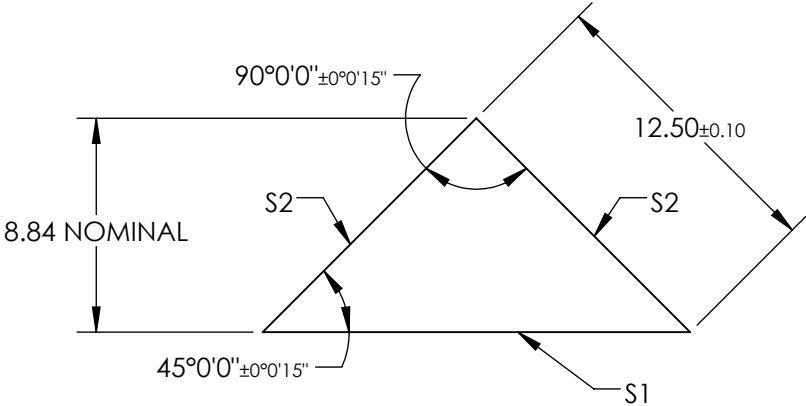


NOTES:

- 1. SUBSTRATE: FUSED SILICA
- 2. COATING (APPLY ACROSS CLEAR APERTURE)
 - S1: NONE
 - S2: 532nm Laser AR Coating
 - R(ABS) < 0.25% @ 532nm @ 0° AOI
- DAMAGE THRESHOLD
 - PULSED: 10J/cm² @ 20ns, 20Hz @ 532nm

3 FINE GRIND SURFACE

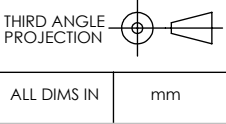
- 4. ROHS COMPLIANT



**FOR INFORMATION ONLY:
DO NOT MANUFACTURE
PARTS TO THIS DRAWING**

SPECIFICATIONS SUBJECT TO CHANGE WITHOUT NOTICE
DIMENSIONS ARE FOR REFERENCE ONLY

| REV. A | S1 | S2 |
|------------------|----------------------|----------------------|
| SHAPE | PLANO | PLANO |
| SURFACE QUALITY | 20-10 | 20-10 |
| CLEAR APERTURE | 15.90 x 11.25 | Ø11.25 |
| SURFACE FLATNESS | λ/20 | λ/20 |
| BEVEL | PROTECTIVE AS NEEDED | PROTECTIVE AS NEEDED |



Edmund Optics®

| TITLE | 12.5mm 1/20 WV 532nm AR CTD HT RA FS PRISM |
|--------|--|
| DWG NO | 37630 |
| SHEET | 1 OF 1 |