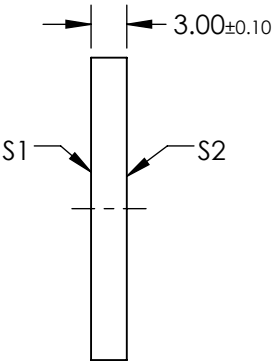
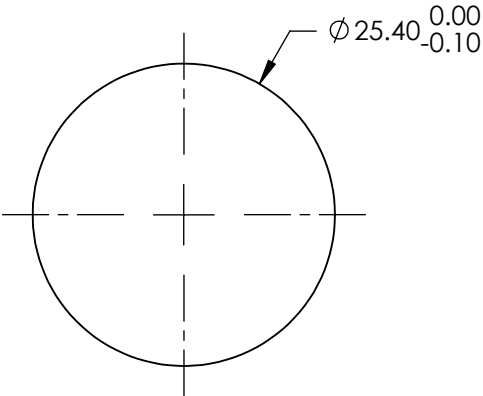
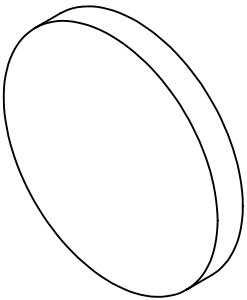


NOTES:

- 1. SUBSTRATE: FUSED SILICA
- 2. RoHS: COMPLIANT
- 3. EXTINCTION RATIO: 20
- 4. SURFACE S2 TO BE PARALLEL TO SURFACE S1 TO WITHIN <30 arcsec
- 5. ANGLE OF INCIDENCE: 72°
- 6. WAVELENGTH RANGE: 980 - 1090nm
- 7. DAMAGE THRESHOLD,
PULSED: TYPICAL: 5 J/cm² @ 1064nm, 10ns
CONTRAST: Tp:Ts >20:1
TRANSMISSION (%): Tp >85 / Ts <4



**FOR INFORMATION ONLY:
DO NOT MANUFACTURE
PARTS TO THIS DRAWING**

SPECIFICATIONS SUBJECT TO CHANGE WITHOUT NOTICE
DIMENSIONS ARE FOR REFERENCE ONLY

	S1	S2	<div><div><div><div><div></div><div></div></div><div><div></div></div></div><div>THIRD ANGLE PROJECTION</div></div><div><div><div></div><div></div></div><div>ALL DIMS IN</div><div>mm</div></div></div> <div><div><div>Edmund Optics®</div><div>TITLE</div><div>DWG NO</div><div>SHEET 1 OF 1</div></div><div><div>25.4mm Dia, Transmission, Ultrafast Polarizer 980 - 1090nm</div><div>88237</div></div></div>			
SHAPE	PLANO	PLANO				
SURFACE QUALITY	20-10	20-10				
CLEAR APERTURE	22.86	22.86				
SURFACE FLATNESS	λ/6	λ/6				