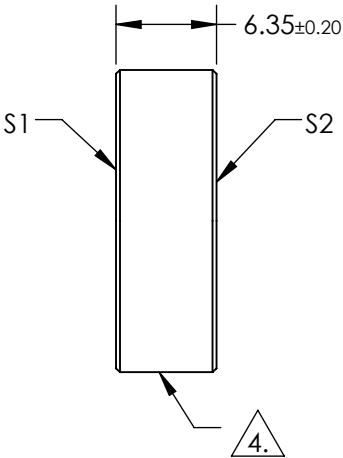
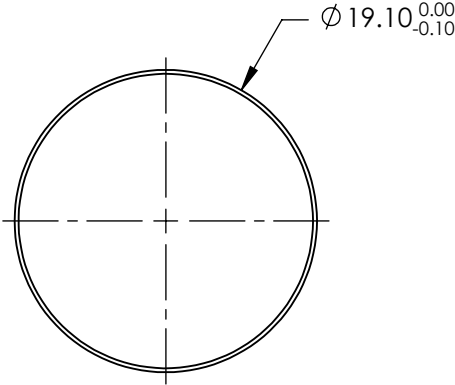


NOTES:

- 1. SUBSTRATE:
N-BK7
- 2. S2 TO BE PARALLEL TO S1 TO WITHIN <3 ARCMINS
- 3. COATING (APPLY ACROSS COATING APERTURE)
S1: NONE
S2: NONE


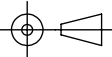
4. FINE GROUND SURFACE

- 5. CLEAR APERTURE AND COATING APERTURE ARE CENTERED ON SURFACE
- 6. POWER, IRREGULARITY, AND SURFACE QUALITY SPECIFICATIONS APPLY
ACROSS CLEAR APERTURE
- 7. ROHS COMPLIANT



**FOR INFORMATION ONLY:
DO NOT MANUFACTURE
PARTS TO THIS DRAWING**

SPECIFICATIONS SUBJECT TO CHANGE WITHOUT NOTICE
DIMENSIONS ARE FOR REFERENCE ONLY

	S1	S2	 Edmund Optics®			
SHAPE	PLANO	PLANO		TITLE	Ø19.1mm UNCTD N-BK7 LASER WINDOW SUBSTRATE	
SURFACE QUALITY	10-5	10-5		DWG NO	38056	SHEET 1 OF 1
SURFACE FLATNESS	λ /10	λ /10				
MIN CLEAR APERTURE	Ø17.19	Ø17.19				
BEVEL	PROTECTIVE AS NEEDED	PROTECTIVE AS NEEDED				
			ALL DIMS IN	mm		