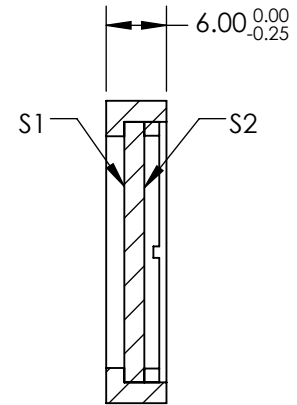
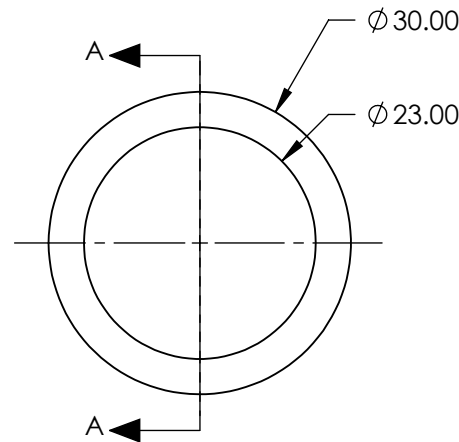
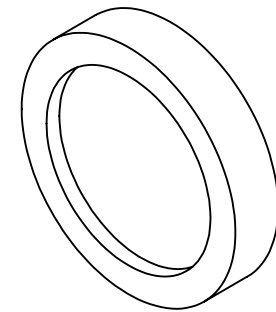
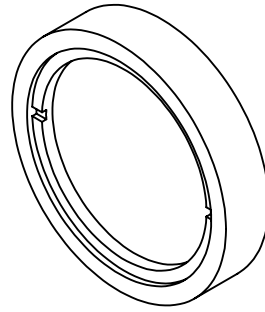


NOTES:

1. SUBSTRATE:  
CRYSTAL QUARTZ
2. COATING (APPLY ACROSS CLEAR APERTURE)  
S1 & S2: R(ABS) <0.25% @ 532nm  
DAMAGE THRESHOLD: 3.5 J/cm<sup>2</sup> @ 10ns @ 1064nm
3. SURFACE S1 TO BE PARALLEL TO SURFACE S2 TO WITHIN <0.5 arcsec
4. RETARDANCE:  $\lambda/4 \pm \lambda/200$
5. TRANSMITTED WAVEFRONT:  $\lambda/10$  FOR CENTRAL 80% OF CLEAR APERTURE
6. RoHS COMPLIANT



SECTION A-A

**FOR INFORMATION ONLY:  
DO NOT MANUFACTURE  
PARTS TO THIS DRAWING**

SPECIFICATIONS SUBJECT TO CHANGE WITHOUT NOTICE  
DIMENSIONS ARE FOR REFERENCE ONLY

**EO**® Edmund Optics®

	S1	S2
CLEAR APERTURE	Ø23.0	Ø23.0
SURFACE QUALITY	10-5	10-5

THIRD ANGLE PROJECTION	TITLE	Ø30mm, 532nm, $\lambda/4$ QUARTZ WAVEPLATE ZERO ORDER		
	ALL DIMS IN	mm	DWG NO	48489