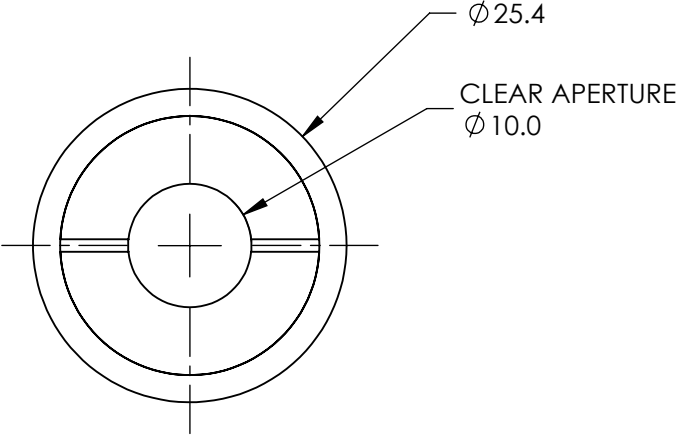
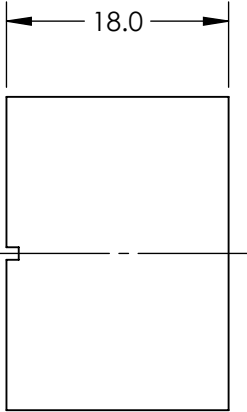
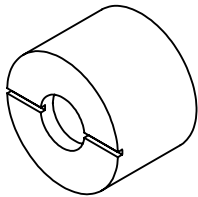


NOTES:

- 1. SUBSTRATE
CALCITE
- 2. EXTINCTION RATIO: >20,000:1
- 3. BEAM DEVIATION: <3 ARCMIN
- 4. DAMAGE THRESHOLD,
PULSED: 10 J/cm² @ 1064nm, 20 ns
- 5. RoHS NOT COMPLIANT

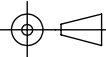
**FOR INFORMATION ONLY:
DO NOT MANUFACTURE
PARTS TO THIS DRAWING**



SPECIFICATIONS SUBJECT TO CHANGE WITHOUT NOTICE
DIMENSIONS ARE FOR REFERENCE ONLY

EO[®] Edmund Optics[®]

CLEAR APERTURE	Ø10
SURFACE QUALITY	20-10
WAVELENGTH RANGE	350 - 2300nm

THIRD ANGLE PROJECTION 		TITLE	CALCITE WOLLASTON POLARIZER	
ALL DIMS IN	mm	DWG NO	68821	SHEET 1 OF 1