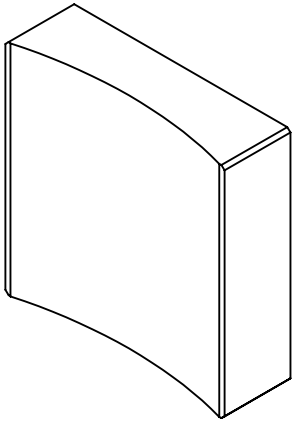
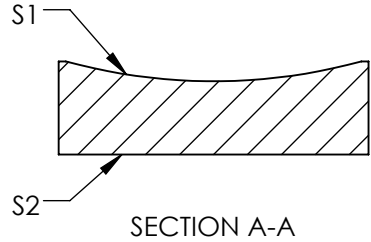
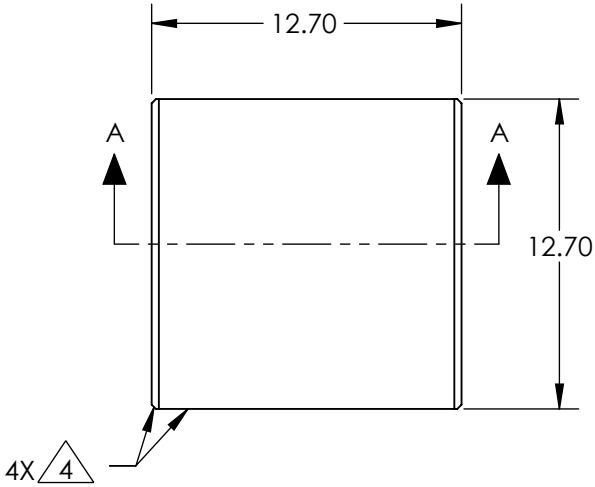


NOTES:

1. SUBSTRATE MATERIAL:
FUSED SILICA
2. CENTERING TOLERANCE (AT 587.6nm):
PLANO AXIS WEDGE: < 3 ARCMIN
POWER ASIX WEDGE: < 4.5 ARCMIN
AXIAL TWIST: < 3 ARCMIN
3. COATING (APPLY ACROSS CLEAR APERTURE)

S1 & S2: R(AVG) ≤ 0.5% FROM 600-1050nm @ 0° AOI
4. FINE GROUND SURFACE
5. POWER, IRREGULARITY, AND SURFACE QUALITY
SPECIFICAIONS APPLY ACROSS CLEAR APERTURE
6. ROHS COMPLIANT



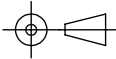
**FOR INFORMATION ONLY:
DO NOT MANUFACTURE
PARTS TO THIS DRAWING**

SPECIFICATIONS SUBJECT TO CHANGE WITHOUT NOTICE
DIMENSIONS ARE FOR REFERENCE ONLY

Edmund Optics®

	S1	S2
SHAPE	CONCAVE	PLANO
SURFACE QUALITY	40 - 20	40 - 20
CLEAR APERTURE	11.43 x 11.43	11.43 x 11.43
BEVEL	PROTECTED AS NEEDED	PROTECTED AS NEEDED

THIRD ANGLE
PROJECTION



ALL DIMS IN

mm

TITLE

LENS CYL SHAPING 12.7mm SQ x -50mm NIR I

DWG NO

36122

SHEET
1 OF 1