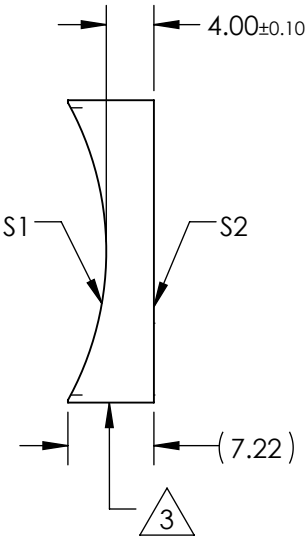
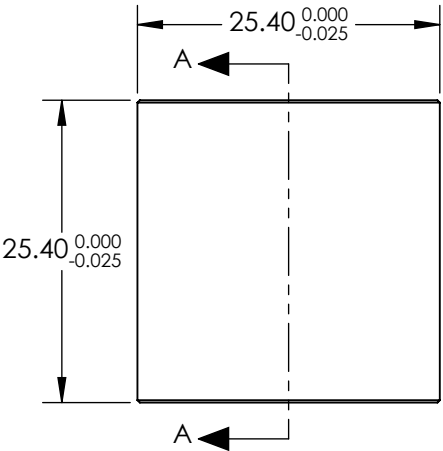


NOTES:

1. SUBSTRATE MATERIAL:
N-BK7
2. COATING (APPLY ACROSS CLEAR APERTURE)
S1 & S2: NONE

3. FINE GROUND SURFACE

4. POWER, IRREGULARITY, AND SURFACE QUALITY
SPECIFICAIONS APPLY ACROSS CLEAR APERTURE
5. FOCAL LENGTH TOLERANCE: $\pm 1\%$
6. PLANO AXIS WEDGE TOLERANCE: < 5 ARCMIN
POWER AXIS WEDGE TOLERANCE: < 5 ARCMIN
AXIAL TWIST ANGLE: < 3 ARCMIN
7. RoHS COMPLIANT


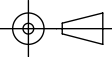


SECTION A-A

**FOR INFORMATION ONLY:
DO NOT MANUFACTURE
PARTS TO THIS DRAWING**

| REV. A | S1 | S2 |
|-------------------------|----------------------|----------------------|
| SHAPE | CONCAVE | PLANO |
| RADIUS | 25.84 | ∞ |
| SURFACE QUALITY | 40 - 20 | 40 - 20 |
| CLEAR APERTURE | 22.86 x 22.86 | 22.86 x 22.86 |
| COATING APERTURE | N/A | N/A |
| POWER AT 632.8nm | 1.5 WAVES PV | 1.5 WAVES PV |
| IRREGULARITY AT 632.8nm | 0.25 WAVE PV | 0.25 WAVE PV |
| BEVEL | PROTECTIVE AS NEEDED | PROTECTIVE AS NEEDED |

SPECIFICATIONS SUBJECT TO CHANGE WITHOUT NOTICE
DIMENSIONS ARE FOR REFERENCE ONLY

| | | | | |
|---|------------|---|-------|-----------------|
| EFL | (-50.00)mm |  Edmund Optics® | | |
| BFL | (-52.64)mm | | | |
|  | TITLE | Lens PCV Cylinder 25.40mm x 25.40mm x - 50.00mm EFL | | |
| | | DWG NO | 34760 | SHEET 1 OF 1 |
| ALL DIMS IN | mm | | | |