

**FOR INFORMATION ONLY:  
DO NOT MANUFACTURE  
PARTS TO THIS DRAWING**

NOTES;

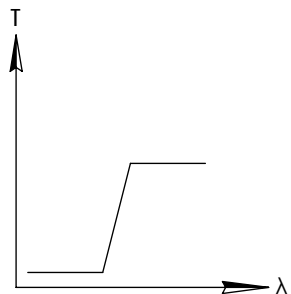
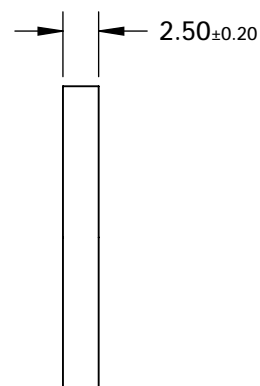
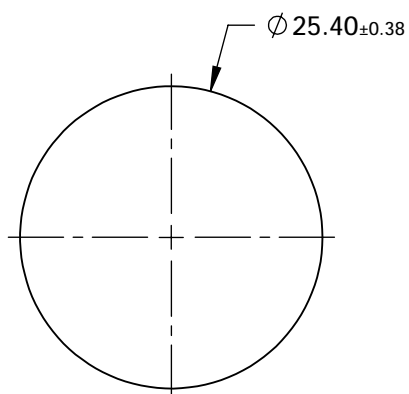
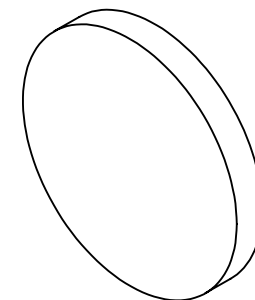
1. COATING(APPLY ACROSS CLEAR APERTURE)

S1:VIS 0°

R(AVG) ≤ 0.4% FROM 425-675nm @ 0° AOI

S2:VIS 0°

R(AVG) ≤ 0.4% FROM 425-675nm @ 0° AOI



LONGPASS FILTER

SPECIFICATIONS SUBJECT TO CHANGE WITHOUT NOTICE  
DIMENSIONS ARE FOR REFERENCE ONLY

REV. 001	S1	S2
SHAPE	PLANO	PLANO
PASSBAND LIMIT 1 $\lambda_{p1}$	810nm	810nm
CUT-OFF POSITION $\lambda_c$	715±9nm	715±9nm
STOPBAND LIMIT $\lambda_s$	620nm	620nm
WAVELENGTH	VIS 0	VIS 0
BEVEL	PROTECTIVE AS NEEDED	PROTECTIVE AS NEEDED

**Edmund Optics®**



ALL DIMS IN

mm

TITLE

Ø25.4mm, HOYA RG-715 LONGPASS FILTER

DWG NO

36305

SHEET  
1 OF 1