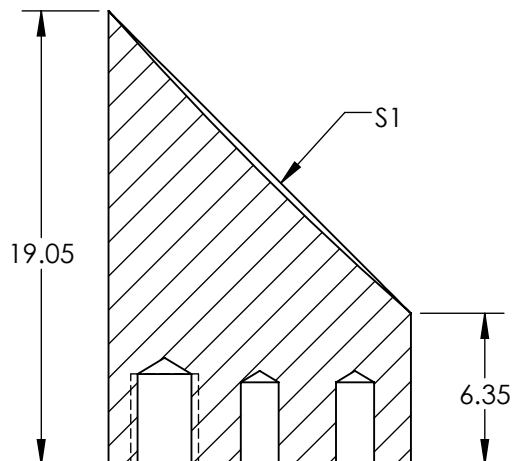
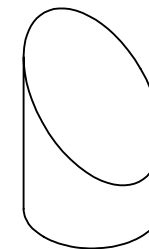


NOTES:

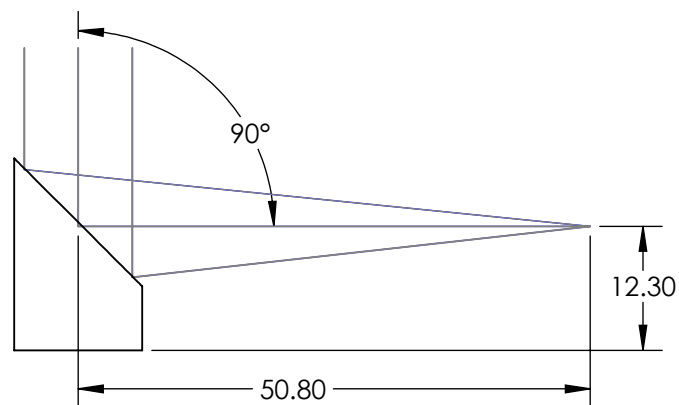
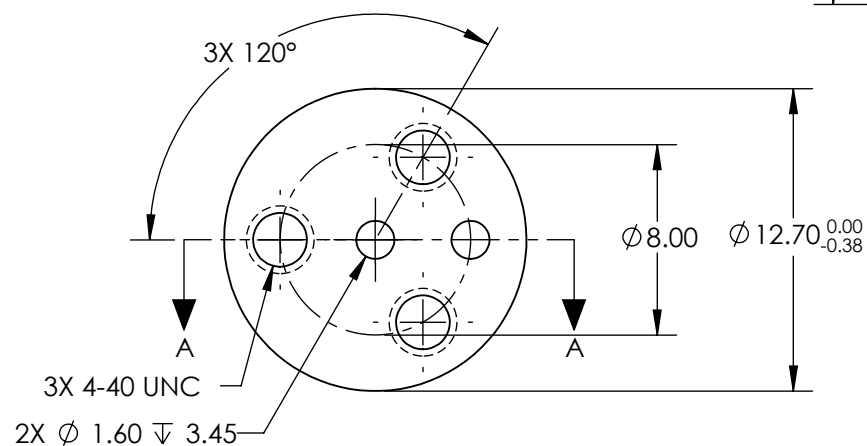
1. SUBSTRATE MATERIAL:
ALUMINUM
2. FINISH (EXCEPT SURFACE S1):
BLACK ANODIZED
3. COATING (APPLY ACROSS CLEAR APERTURE)
S1: PROTECTED GOLD
R(AVG) >94% @ 0.7-0.8 μ m
R(AVG) >97% @ 0.8-2.0 μ m
R(AVG) >98% @ 2-12 μ m

SURFACE ROUGHNESS: <100 Å RMS
4. FOCAL LENGTH TOLERANCE: $\pm 1\%$
5. ROHS COMPLIANT


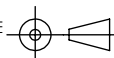
**FOR INFORMATION ONLY:
DO NOT MANUFACTURE
PARTS TO THIS DRAWING**



SECTION A-A



SPECIFICATIONS SUBJECT TO CHANGE WITHOUT NOTICE
DIMENSIONS ARE FOR REFERENCE ONLY

| | | | | | | |
|---|----------------------|---|-------|--|-------|-----------------|
| REV. A | S1 | EFL | 50.80 |  Edmund Optics® | | |
| SHAPE | PARABOLIC | PFL | 25.40 | | | |
| REFLECTIVE WAVEFRONT DISTORTION AT 632.8nm (RMS) | $\lambda/2$ | <div>THIRD ANGLE PROJECTION</div>  | TITLE | Ø12.7 X 50.8mm EFL 90° OAP PROTECTED GOLD MIRROR 100Å | | |
| SURFACE FIGURE AT 632.8nm (RMS) | $\lambda/4$ | | | | | |
| CLEAR APERTURE | 90% | ALL DIMS IN | mm | DWG NO | 35486 | SHEET 1 OF 1 |
| BEVEL | PROTECTIVE AS NEEDED | | | | | |