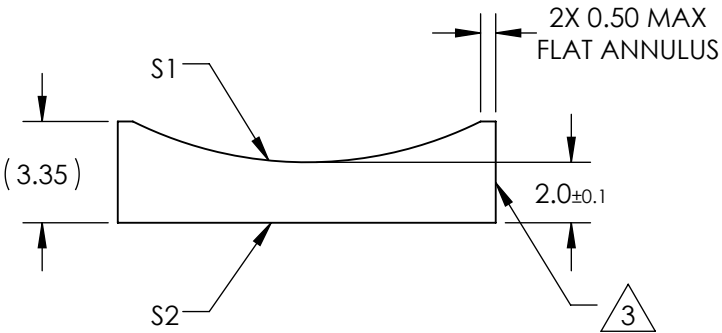
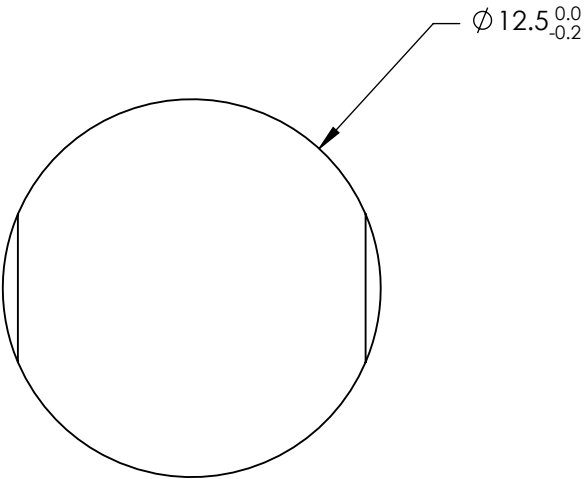


NOTES:


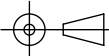
1. SUBSTRATE MATERIAL:  
N-BK7
2. COATING (APPLY ACROSS CLEAR APERTURE)  
  
S1 & S2: MgF2  
  
R(avg) ≤1.75% @ 400 - 700nm

3. FINE GROUND SURFACE
4. POWER, IRREGULARITY, AND SURFACE QUALITY  
SPECIFICAIONS APPLY ACROSS CLEAR APERTURE
5. RoHS COMPLIANT



**FOR INFORMATION ONLY:  
DO NOT MANUFACTURE  
PARTS TO THIS DRAWING**

SPECIFICATIONS SUBJECT TO CHANGE WITHOUT NOTICE  
DIMENSIONS ARE FOR REFERENCE ONLY

REV. A	S1	S2	 Edmund Optics®									
SHAPE	CONVEX	PLANO						EFL	-25			
RADIUS	-12.92	∞	BFL	-26.32								
SURFACE QUALITY	60-40	60-40	TITLE							12.5mm DIA X -25mm FL MgF2 COATED, CYLINDER LENS		
CLEAR APERTURE	Ø11.50	Ø11.50										
COATING APERTURE	Ø11.50	Ø11.50	ALL DIMS IN		mm		DWG NO		48376		SHEET 1 OF 1	
BEVEL	PROTECTED AS NEEDED	PROTECTED AS NEEDED										