

NOTES:

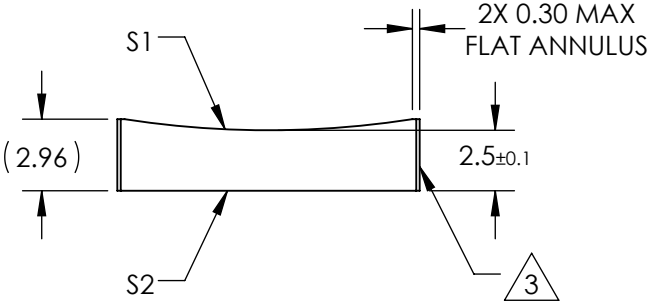
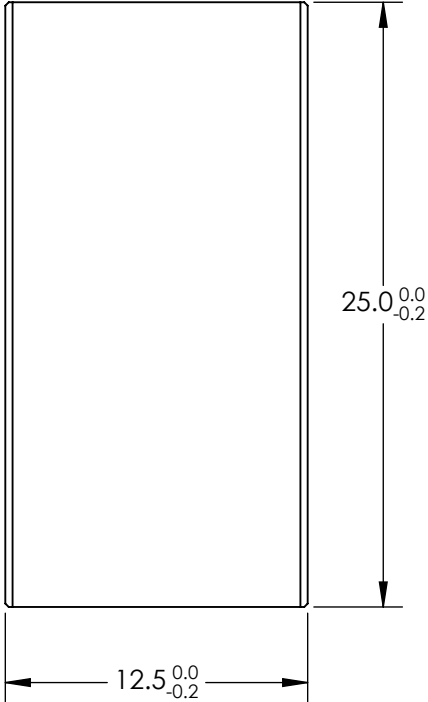
- 1. SUBSTRATE MATERIAL:
N-BK7
- 2. COATING (APPLY ACROSS CLEAR APERTURE)

S1 & S2: VIS 0°


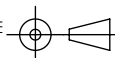
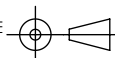
R(avg) ≤0.4% @ 425 - 675nm

- 3. FINE GROUND SURFACE
- 4. POWER, IRREGULARITY, AND SURFACE QUALITY
SPECIFICAIONS APPLY ACROSS CLEAR APERTURE
- 5. RoHS COMPLIANT

**FOR INFORMATION ONLY:
DO NOT MANUFACTURE
PARTS TO THIS DRAWING**



SPECIFICATIONS SUBJECT TO CHANGE WITHOUT NOTICE
DIMENSIONS ARE FOR REFERENCE ONLY

REV. A	S1	S2	 Edmund Optics®						
SHAPE	CONVEX	PLANO							
RADIUS	38.76	∞	EFL	-75		TITLE	12.5mm H X 25mm L X -75mm FL VIS 0° COATED, CYLINDER LENS		
SURFACE QUALITY	60-40	60-40	BFL	-76.7					
CLEAR APERTURE	11.50 X 24.00	11.50 X 24.00			ALL DIMS IN	mm	DWG NO	69800	SHEET 1 OF 1
COATING APERTURE	11.50 X 24.00	11.50 X 24.00							
BEVEL	PROTECTED AS NEEDED	PROTECTED AS NEEDED							