

NOTES:

1. SUBSTRATE MATERIAL:
N-BK7

2. COATING (APPLY ACROSS CLEAR APERTURE)

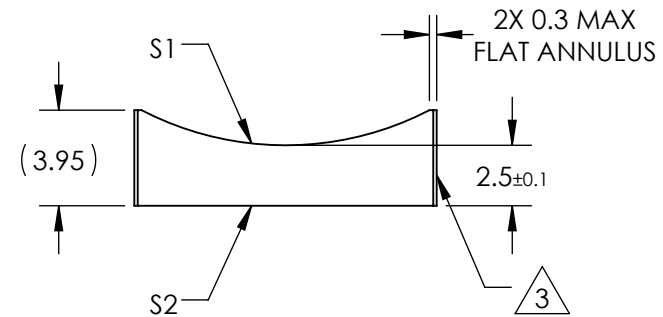
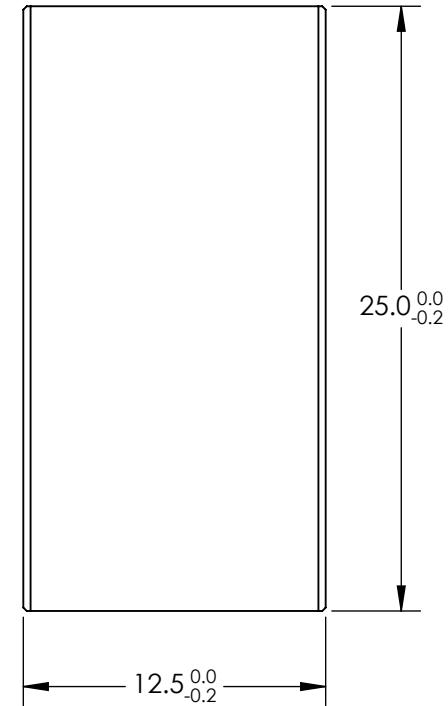
S1 & S2: VIS 0°

R(avg) ≤0.4% @ 425 - 675nm

3. FINE GROUND SURFACE


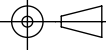
4. POWER, IRREGULARITY, AND SURFACE QUALITY SPECIFICATIONS APPLY ACROSS CLEAR APERTURE

5. RoHS COMPLIANT



**FOR INFORMATION ONLY:
DO NOT MANUFACTURE
PARTS TO THIS DRAWING**

SPECIFICATIONS SUBJECT TO CHANGE WITHOUT NOTICE
DIMENSIONS ARE FOR REFERENCE ONLY

REV. A	S1	S2	EFL	-25	 Edmund Optics®	TITLE 12.5mm H X 25mm L X -25mm FL VIS 0° COATED, CYLINDER LENS	
SHAPE	CONVEX	PLANO	BFL	-26.65			
RADIUS	12.92	∞	THIRD ANGLE PROJECTION 		DWG NO 69798		SHEET 1 OF 1
SURFACE QUALITY	60-40	60-40	ALL DIMS IN mm				
CLEAR APERTURE	11.50 X 24.00	11.50 X 24.00					
COATING APERTURE	11.50 X 24.00	11.50 X 24.00					
BEVEL	PROTECTED AS NEEDED	PROTECTED AS NEEDED					