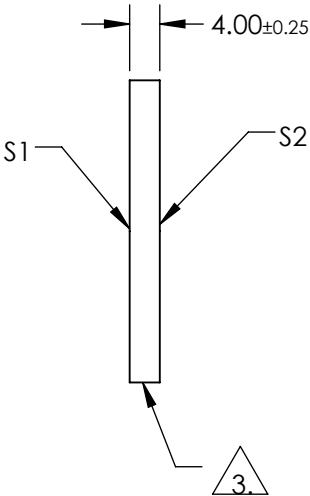
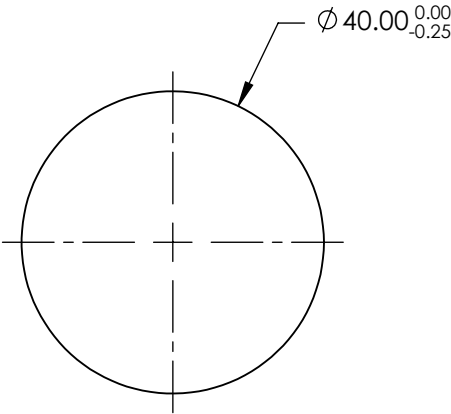
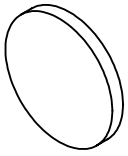


NOTES:

1. SUBSTRATE:  
BOROFLOAT®
2. COATING SPECIFICATION:  
S1: Enhanced Aluminum (250-700nm)  
R(AVG) >89% @ 250 - 450nm  
R(AVG) >85% @ 250 - 700nm


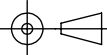
△ 3. FINE GROUND SURFACE

4. ROHS COMPLIANT



**FOR INFORMATION ONLY:  
DO NOT MANUFACTURE  
PARTS TO THIS DRAWING**

SPECIFICATIONS SUBJECT TO CHANGE WITHOUT NOTICE  
DIMENSIONS ARE FOR REFERENCE ONLY

		S1	S2	 Edmund Optics®		
SHAPE		PLANO	PLANO			
SURFACE QUALITY		60-40	COMMERCIAL POLISH		TITLE	40mm Dia. UV Enhanced Aluminum, λ/4 Mirror
CLEAR APERTURE		Ø34.00	N/A		DWG NO	63172
BEVEL		PROTECTIVE AS NEEDED	PROTECTIVE AS NEEDED	ALL DIMS IN	mm	SHEET 1 OF 1