

NOTES:

- 1. SUBSTRATE: FUSED SILICA
- 2. COATING SPECIFICATION:

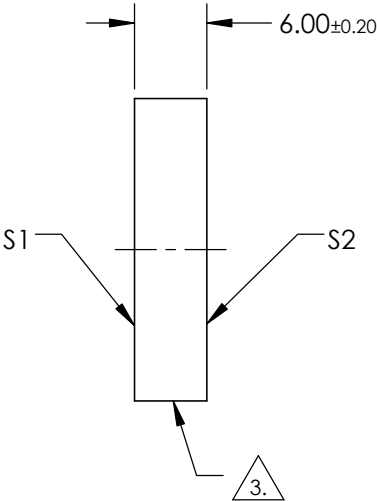
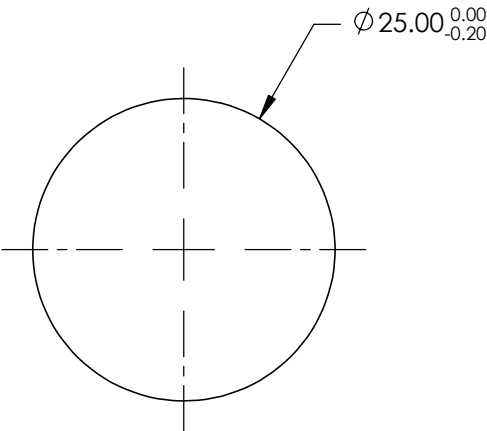
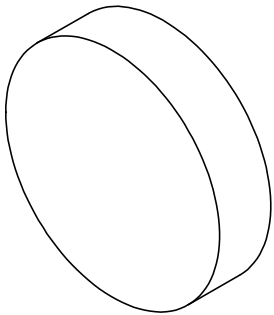
Diode Laser
S1: R(abs) >99.8% @ 635/670nm
S2: R(avg) >98% @ 600 - 700nm

3. FINE GRIND SURFACE

- 4. POWER, IRREGULARITY, AND SURFACE QUALITY SPECIFICATIONS
APPLY ACROSS CLEAR APERTURE

- 5. ROHS COMPLIANT

**FOR INFORMATION ONLY:
DO NOT MANUFACTURE
PARTS TO THIS DRAWING**



SPECIFICATIONS SUBJECT TO CHANGE WITHOUT NOTICE
DIMENSIONS ARE FOR REFERENCE ONLY

	S1	S2
SHAPE	PLANO	PLANO
SURFACE QUALITY	10-5	FINE GROUND
SURFACE ACCURACY	$\lambda/10$	N/A
CLEAR APERTURE	>90%	N/A
BEVEL	PROTECTIVE AS NEEDED	PROTECTIVE AS NEEDED

**Edmund Optics®**

THIRD ANGLE
PROJECTION



TITLE

25mm Dia 635nm/670nm 0°, Laser Diode Mirror

ALL DIMS IN

mm

DWG NO

63127

SHEET
1 OF 1