

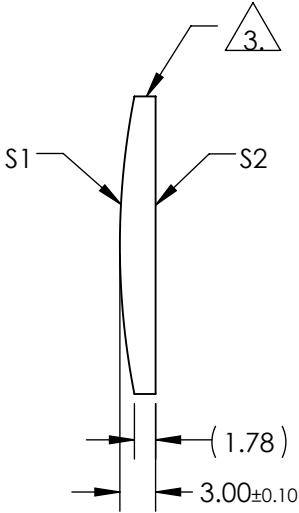
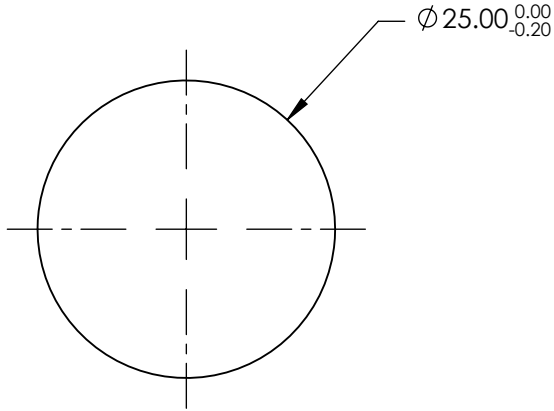
NOTES:

1. SUBSTRATE MATERIAL:
N-BK7
2. COATING (APPLY ACROSS CLEAR APERTURE)

S1 & S2: VIS-NIR (400-1000nm)
R(ABS) $\leq 0.25\%$ @ 880nm
R(AVG) $\leq 1.25\%$ @ 400 - 870nm
R(AVG) $\leq 1.25\%$ @ 890 - 1000nm

3. FINE GROUND SURFACE

4. RoHS COMPLIANT



**FOR INFORMATION ONLY:
DO NOT MANUFACTURE
PARTS TO THIS DRAWING**

SPECIFICATIONS SUBJECT TO CHANGE WITHOUT NOTICE
DIMENSIONS ARE FOR REFERENCE ONLY

| | | | | | | |
|-----------------|----------------------|----------------------|---|--------|---|--|
| | S1 | S2 | EFL | 125.00 |  Edmund Optics® | |
| SHAPE | CONVEX | PLANO | BFL | 123.02 | | |
| RADIUS | 64.60 | INFINITY |  | | TITLE | 25mm DIA X 125mm FL VIS-NIR COATED, CYLINDER LENS |
| SURFACE QUALITY | 60-40 | 60-40 | | | | |
| CLEAR APERTURE | Ø24.00 | Ø24.00 |  | | DWG NO | 69782 |
| BEVEL | PROTECTIVE AS NEEDED | PROTECTIVE AS NEEDED | | | | |
| | | | ALL DIMS IN | mm | | SHEET 1 OF 1 |