

NOTES:

1. SUBSTRATE: N-BK7

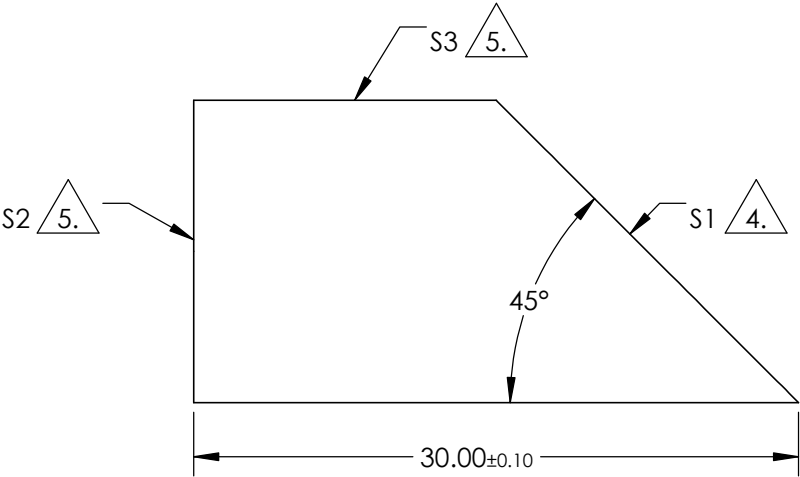
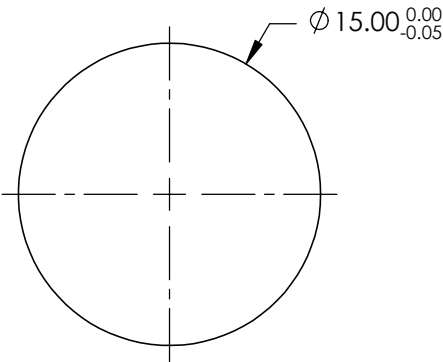
2. COATING

- S1: PROTECTED ALUMINUM
R(avg) >85% @ 400 - 700nm
DENSITY LIMIT : 0.3 J/cm² @ 532nm & 1064nm, 10ns
- S2: UNCOATED
- S3: UNCOATED

3. RoHS COMPLIANT


4. POLISHED SURFACE

5. FINE GRIND SURFACE



**FOR INFORMATION ONLY:
DO NOT MANUFACTURE
PARTS TO THIS DRAWING**

SPECIFICATIONS SUBJECT TO CHANGE WITHOUT NOTICE
DIMENSIONS ARE FOR REFERENCE ONLY

REV. A	S1	S2, S3			Edmund Optics®		
ANGLE TOLERANCE (arcmin)	±10	±10	THIRD ANGLE PROJECTION		TITLE	Ø15mm, 45°, ALUMINUM COATED, ROD LENS	
WAVELENGTH RANGE (nm)	400 - 700	N/A					
SURFACE QUALITY	40-20	N/A					
BEVEL	PROTECTIVE AS NEEDED	PROTECTIVE AS NEEDED	ALL DIMS IN	mm	DWG NO	49401	SHEET 1 OF 1