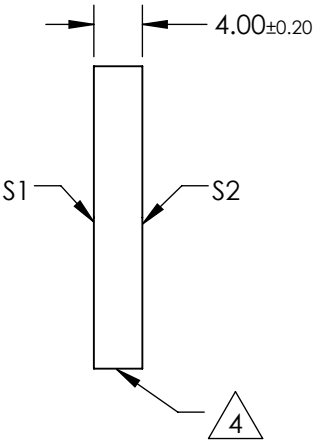
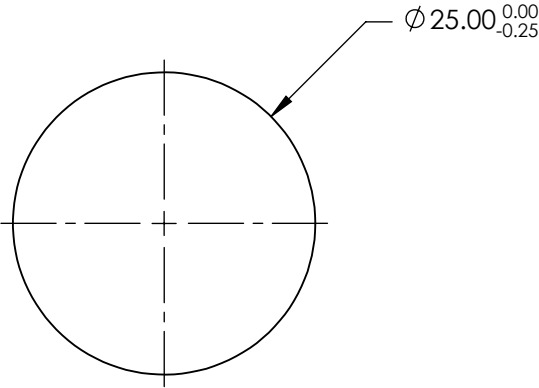
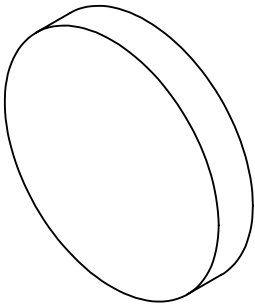


NOTES:

- 1. SUBSTRATE:  
N-BK7
- 2. S2 TO BE PARALLEL WITH S1 TO <1 ARCMIN
- 3. COATING (APPLY ACROSS CLEAR APERTURE)  
S1 & S2: RAVG ≤0.4% @ 425 - 675nm
- 4. FINE GRIND SURFACE
- 5. RoHS COMPLIANT
- 6. SURFACE FLATNESS (P-V):  
λ/4 (per inch over clear aperture)



**FOR INFORMATION ONLY:**  
**DO NOT MANUFACTURE**  
**PARTS TO THIS DRAWING**

SPECIFICATIONS SUBJECT TO CHANGE WITHOUT NOTICE  
DIMENSIONS ARE FOR REFERENCE ONLY

**Edmund Optics®**

	S1	S2
SHAPE	PLANO	PLANO
SURFACE QUALITY	60-40	60-40
CLEAR APERTURE	Ø22.50	Ø22.50
BEVEL	PROTECTIVE AS NEEDED	PROTECTIVE AS NEEDED

THIRD ANGLE  
PROJECTION

ALL DIMS IN mm

TITLE	25mm DIA., 4mm THICK, VIS 0° COATED λ/4 N-BK7 WINDOW
DWG NO	47520
SHEET	1 OF 1