

NOTES:

1. SUBSTRATE MATERIAL:  
N-BK7
2. COATING (APPLY ACROSS CLEAR APERTURE)

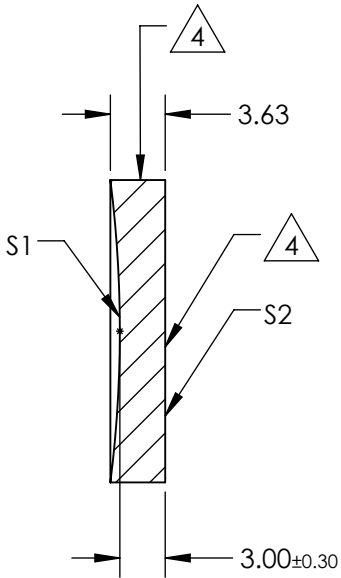
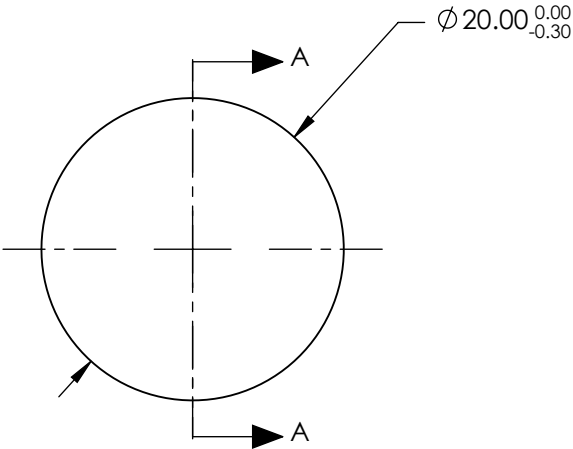
S1: Protected Aluminum  
R(avg) >85% @ 400 - 700nm  
R(avg) >90% @ 400 - 2000nm

S2: NONE

3. POWER, IRREGULARITY, SURFACE QUALITY, AND COATING  
SPECIFICATIONS APPLY ACROSS CLEAR APERTURE

4. FINE GROUND SURFACE

5. ROHS COMPLIANT



SECTION A-A

**FOR INFORMATION ONLY:  
DO NOT MANUFACTURE  
PARTS TO THIS DRAWING**

REV. A	S1	S2
SHAPE	CONCAVE	PLANO
RADIUS	80	INFINITY
EFFECTIVE FOCAL LENGTH	40mm	N/A
FOCAL LENGTH TOLERANCE	±2%	N/A
APERTURE	f/2	N/A
SURFACE QUALITY	60-40	N/A
SURFACE ACCURACY	λ/4	N/A
BEVEL	PROTECTIVE AS NEEDED	PROTECTIVE AS NEEDED

SPECIFICATIONS SUBJECT TO CHANGE WITHOUT NOTICE  
DIMENSIONS ARE FOR REFERENCE ONLY

**Edmund Optics®**



ALL DIMS IN

mm

TITLE

20mm Dia x 40mm Focal Length, Spherical  
Mirror

DWG NO

46238

SHEET  
1 OF 1