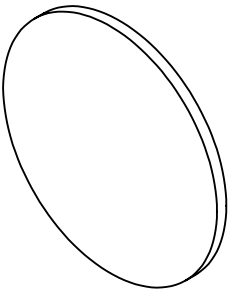


NOTES:

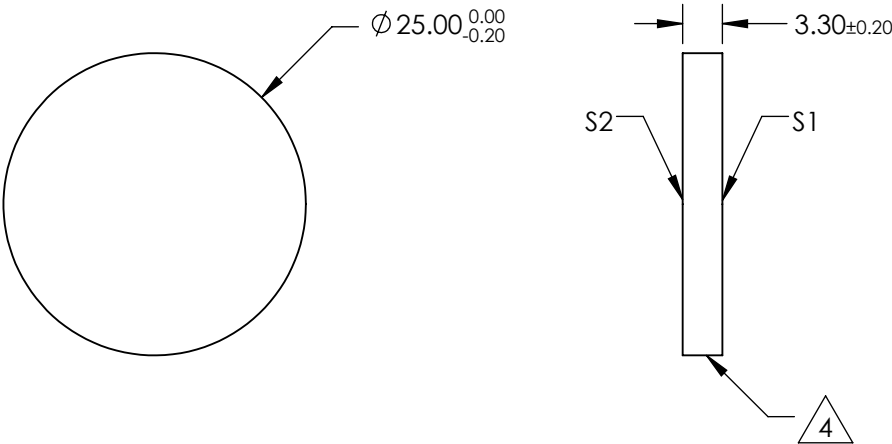
1. Substrate
2. CLEAR APERTURE AND COATING APERTURE ARE CENTERED ON SURFACES
3. COATING (APPLY ACROSS COATING APERTURE)
S1: Ravg ≥ 95% @ 400 - 690nm @ 45° AOI
Tavg ≥ 90% @ 750 - 1200nm @ 45° AOI
S2: AR Coating: Ravg <1.0% @ 700 - 1150nm@ 45° AOI

**FOR INFORMATION ONLY:
DO NOT MANUFACTURE
PARTS TO THIS DRAWING**


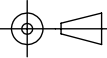


4. FINE GRIND SURFACE

5. POWER, IRREGULARITY, AND SURFACE QUALITY SPECIFICATIONS APPLY ACROSS CLEAR APERTURE
6. RoHS COMPLIANT



SPECIFICATIONS SUBJECT TO CHANGE WITHOUT NOTICE
DIMENSIONS ARE FOR REFERENCE ONLY

	S1	S2	<div> Edmund Optics®</div>			
SHAPE	PLANO	PLANO				
SURFACE FLATNESS	4 - 6λ	4 - 6λ	<div>THIRD ANGLE PROJECTION</div> 	TITLE		
SURFACE QUALITY	80-50	80-50		Ø25mm, 45° AOI, COLD MIRROR		
BEVEL	PROTECTIVE AS NEEDED	PROTECTIVE AS NEEDED	ALL DIMS IN	mm	DWG NO	SHEET
					64447	1 OF 1