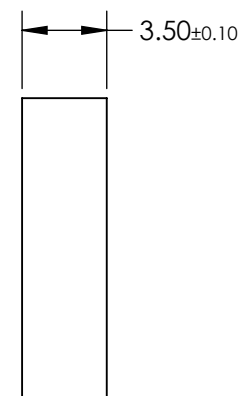
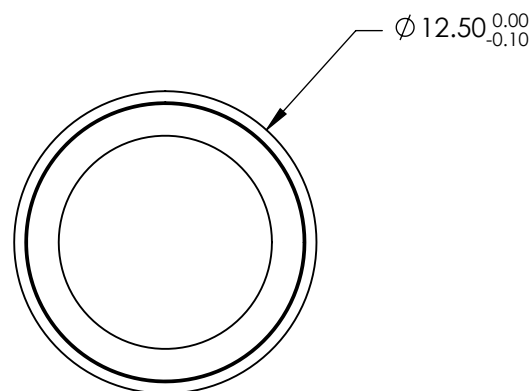
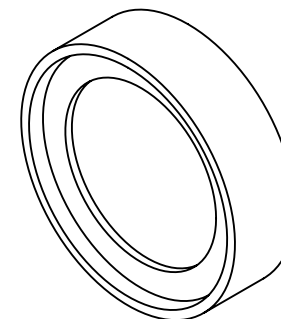


NOTES:

**FOR INFORMATION ONLY:  
DO NOT MANUFACTURE  
PARTS TO THIS DRAWING**

1. SUBSTRATE
2. SURFACE S2 TO BE PARALLEL WITH SURFACE S1 TO WITHIN 10 ARCSEC
3. COATING (APPLY ACROSS CLEAR APERTURE)  
PHYSICAL DURABILITY: MIL-C-48497A  
ENVIRONMENTAL DURABILITY: MIL-STD-810F  
Tavg ≥93% @ 641.0 - 1427.4nm
4. FINE GROUND SURFACE
5. POWER, IRREGULARITY, AND SURFACE QUALITY SPECIFICATIONS APPLY  
ACROSS CLEAR APERTURE
6. TRANSMITTED WAVEFRONT DISTORTION RMS @ <λ/4 @ 633nm
7. RoHS COMPLIANT



SPECIFICATIONS SUBJECT TO CHANGE WITHOUT NOTICE  
DIMENSIONS ARE FOR REFERENCE ONLY

REV. A	S1	S2
SHAPE	PLANO	PLANO
REJECTION WAVELENGTH	513 - 632.8	513 - 632.8
SURFACE QUALITY	60-40	60-40
CLEAR APERTURE	Ø10	Ø10
BEVEL	PROTECTIVE AS NEEDED	PROTECTIVE AS NEEDED



ALL DIMS IN mm

**Edmund Optics®**

TITLE

Ø12.5mm, 639.1nm, RAMAN EDGE FILTER

DWG NO

86226

SHEET  
1 OF 1