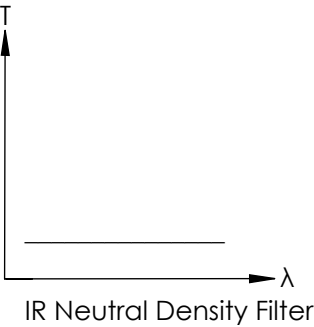
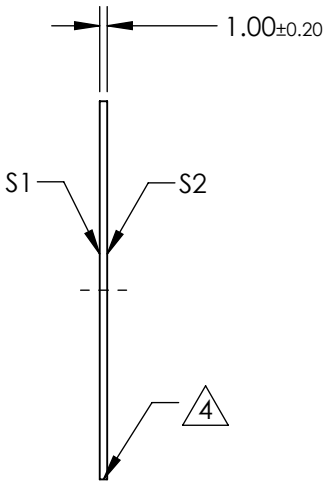
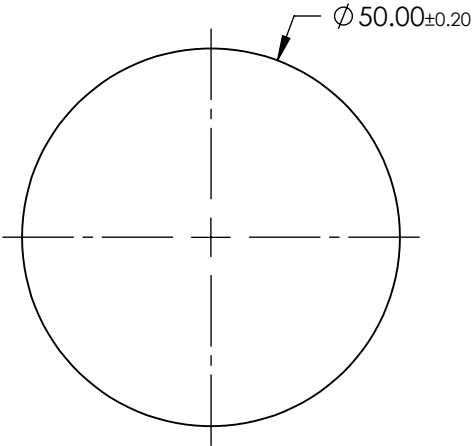
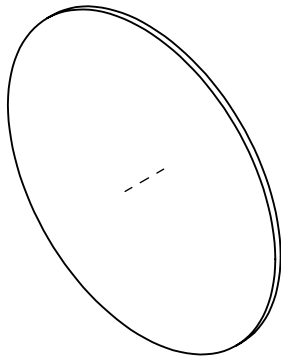


NOTES:

- 1. SUBSTRATE: Germanium (Ge)
- 2. SURFACE S2 TO BE PARALLEL WITH SURFACE S1 TO <10 ARCMIN
- 3. COATING (APPLY ACROSS CLEAR APERTURE)
OPTICAL DENSITY = 2.0 @ 2 - 14 μ m
TRANSMISSION = 1.0 @ 2 - 14 μ m
- 4. FINE GRIND SURFACE
- 5. POWER, IRREGULARITY, AND SURFACE QUALITY SPECIFICATIONS
APPLY ACROSS CLEAR APERTURE
- 6. ROHS COMPLIANT

**FOR INFORMATION ONLY:
DO NOT MANUFACTURE
PARTS TO THIS DRAWING**



SPECIFICATIONS SUBJECT TO CHANGE WITHOUT NOTICE
DIMENSIONS ARE FOR REFERENCE ONLY

	S1	S2
SHAPE	PLANO	PLANO
SURFACE FLATNESS	3 - 5 λ	3 - 5 λ
SURFACE QUALITY	80-50	80-50
CLEAR APERTURE	ϕ 45	ϕ 45
BEVEL	PROTECTED AS NEEDED	PROTECTED AS NEEDED



ALL DIMS IN

mm

Edmund Optics®

TITLE

2.0 OD, 50mm Dia., IR Neutral Density Filter

DWG NO

64361

SHEET
28 OF 37