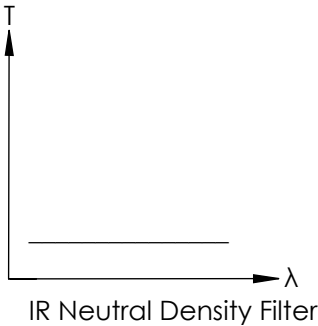
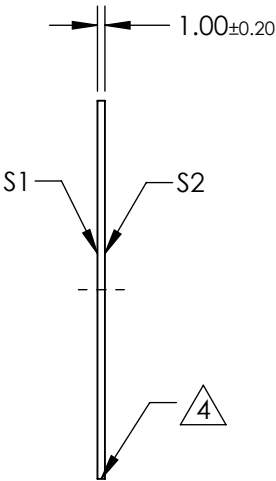
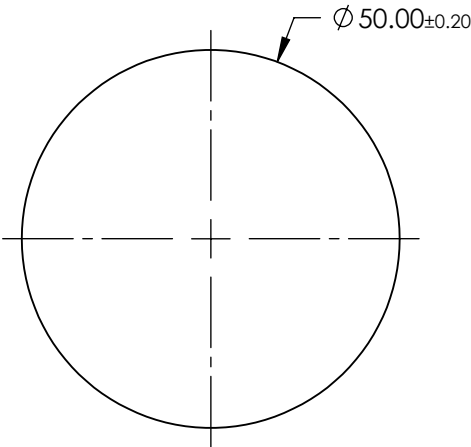
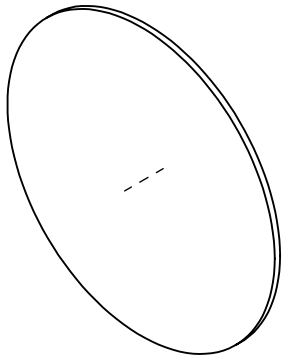


NOTES:

- 1. SUBSTRATE: Germanium (Ge)
- 2. SURFACE S2 TO BE PARALLEL WITH SURFACE S1 TO <10 ARCMIN
- 3. COATING (APPLY ACROSS CLEAR APERTURE)  
OPTICAL DENSITY = 0.5 @ 2 - 14  $\mu$ m  
TRANSMISSION = 31.6 @ 2 - 14  $\mu$ m
- 4. FINE GRIND SURFACE
- 5. POWER, IRREGULARITY, AND SURFACE QUALITY SPECIFICATIONS  
APPLY ACROSS CLEAR APERTURE
- 6. ROHS COMPLIANT

FOR INFORMATION ONLY:  
DO NOT MANUFACTURE  
PARTS TO THIS DRAWING



SPECIFICATIONS SUBJECT TO CHANGE WITHOUT NOTICE  
DIMENSIONS ARE FOR REFERENCE ONLY

	S1	S2
SHAPE	PLANO	PLANO
SURFACE FLATNESS	3 - 5 $\lambda$	3 - 5 $\lambda$
SURFACE QUALITY	80-50	80-50
CLEAR APERTURE	$\phi$ 45	$\phi$ 45
BEVEL	PROTECTED AS NEEDED	PROTECTED AS NEEDED

THIRD ANGLE PROJECTION		Edmund Optics®	
ALL DIMS IN mm		TITLE	0.5 OD, 50mm Dia., IR Neutral Density Filter
		DWG NO	64359
		SHEET 26 OF 37	