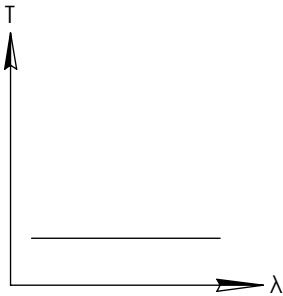
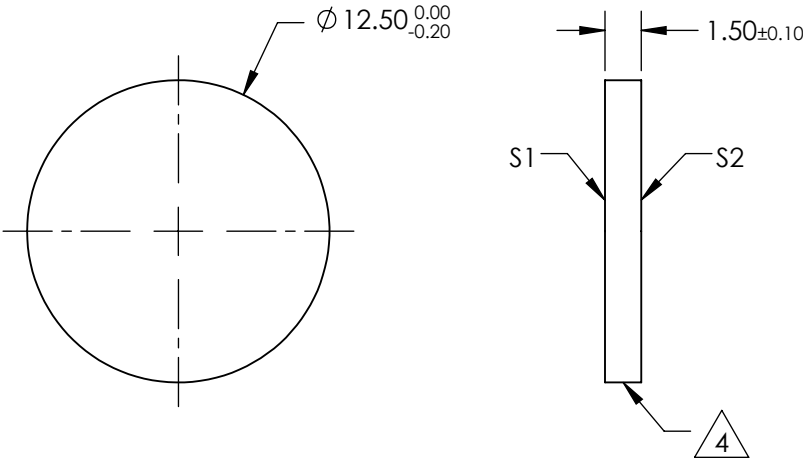
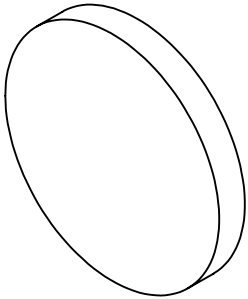


NOTES:


- 1. SUBSTRATE
- 2. SURFACE S2 TO BE PARALLEL WITH SURFACE S1 TO WITHIN 5 arcsec
- 3. COATING (APPLY ACROSS COATING APERTURE)
OPTICAL DENSITY = $2 \pm 10\%$ FROM 250 - 700
S1: PROPRIETARY N.D.
S2: NONE
- 4. FINE GRIND SURFACE
- 5. POWER, IRREGULARITY, AND SURFACE QUALITY SPECIFICATIONS
APPLY ACROSS CLEAR APERTURE
- 6. TRANSMITTED WAVEFRONT DISTORTION P-V @ 632.8nm: $\leq \lambda/4$
- 7. ROHS COMPLIANT

FOR INFORMATION ONLY:
DO NOT MANUFACTURE
PARTS TO THIS DRAWING



UV-VIS NEUTRAL DENSITY FILTER

SPECIFICATIONS SUBJECT TO CHANGE WITHOUT NOTICE
DIMENSIONS ARE FOR REFERENCE ONLY

	S1	S2	<div><div></div><div></div></div> <div>Edmund Optics®</div>				
SHAPE	PLANO	PLANO					
SURFACE QUALITY	40-20	40-20					
CLEAR APERTURE	Ø10	Ø10					
COATING APERTURE	Ø10	Ø10					
BEVEL	PROTECTIVE AS NEEDED	PROTECTIVE AS NEEDED	THIRD ANGLE PROJECTION		TITLE	OD 2, Ø12.5mm, UV-VIS ND FILTER	
			ALL DIMS IN	mm	DWG NO	48623	SHEET 1 OF 1