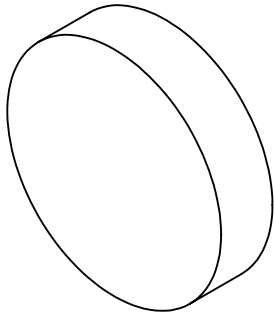


**FOR INFORMATION ONLY:
DO NOT MANUFACTURE
PARTS TO THIS DRAWING**

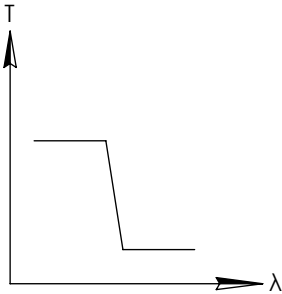
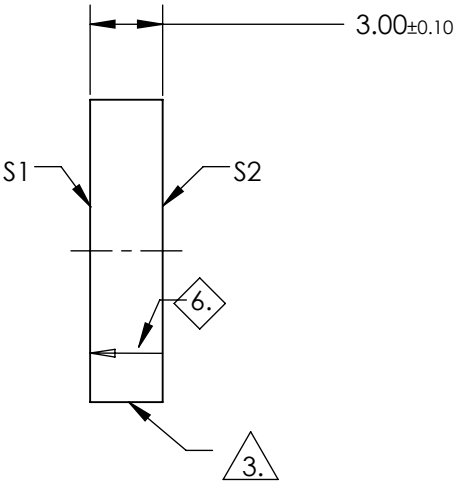
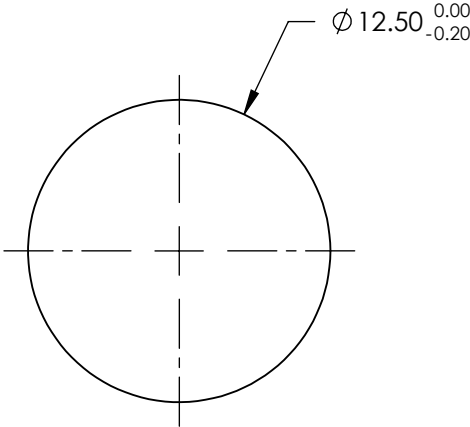
NOTES:

1. SUBSTRATE: UV GRADE FUSED SILICA
2. COATING (APPLY ACROSS COATING APERTURE)
DURABILITY: MIL-C-48497A, SECT. 3.4.1



PERFORMANCE SPECIFICATIONS @ 0° AOI
T(AVG): ≥91% FROM 535 - 1135nm
T(AVG): ≤ 0.01 % FROM 1190 - 1650nm
CUT-OFF SLOPE: <1%
CUT-OFF WAVELENGTH: 1150nm ±1%

3. FINE GRIND SURFACE
4. TRANSMITTED WAVEFRONT DISTORTION RMS @ ≤λ/4 (prior to coating)
5. ROHS COMPLIANT
6. ARROW POINTS TOWARDS THE FILTER COATED SURFACE



SHORTPASS FILTER

SPECIFICATIONS SUBJECT TO CHANGE WITHOUT NOTICE
DIMENSIONS ARE FOR REFERENCE ONLY

	S1	S2
SHAPE	PLANO	PLANO
SURFACE QUALITY	60-40	60-40
CLEAR APERTURE	>80%	>80%
BEVEL	PROTECTIVE AS NEEDED	PROTECTIVE AS NEEDED

Edmund Optics®



ALL DIMS IN mm

TITLE	1150nm 12.5mm Diameter, OD 4 Shortpass Filter		
DWG NO	89669	SHEET	1 OF 1