

NOTES:

1. SUBSTRATE: UV GRADE FUSED SILICA
2. COATING (APPLY ACROSS COATING APERTURE)

DURABILITY: MIL-C-48497A, SECT. 3.4.1

PERFORMANCE SPECIFICATIONS @ 0° AOI

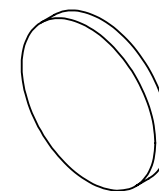
T(AVG): ≥91% FROM 350 - 661nm

T(AVG): ≤0.01% FROM 690 - 1000nm

CUT-OFF SLOPE: <1%

CUT-OFF WAVELENGTH: 675nm ± 1%

**FOR INFORMATION ONLY:
DO NOT MANUFACTURE
PARTS TO THIS DRAWING**

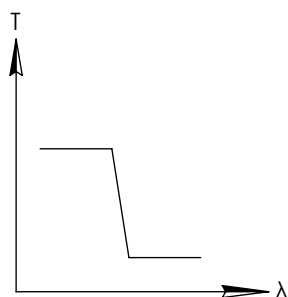
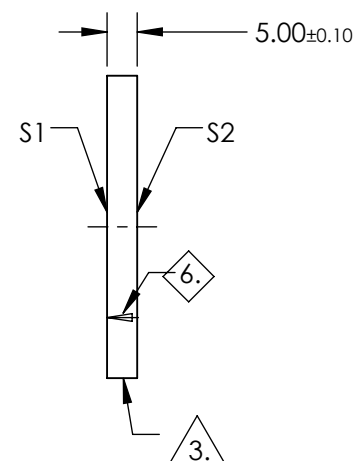
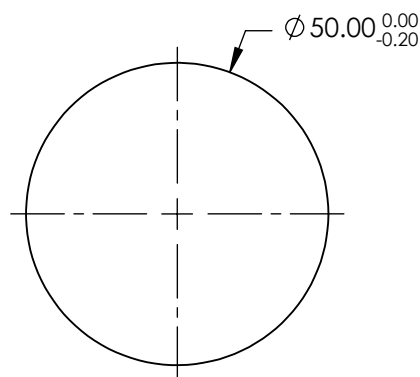


3. FINE GRIND SURFACE

4. TRANSMITTED WAVEFRONT DISTORTION RMS @ ≤λ/4 (prior to coating)

5. ROHS COMPLIANT

6. ARROW POINTS TOWARDS THE FILTER COATED SURFACE

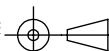


SHORTPASS FILTER

SPECIFICATIONS SUBJECT TO CHANGE WITHOUT NOTICE
DIMENSIONS ARE FOR REFERENCE ONLY

	S1	S2
SHAPE	PLANO	PLANO
SURFACE QUALITY	60-40	60-40
CLEAR APERTURE	>80%	>80%
BEVEL	PROTECTIVE AS NEEDED	PROTECTIVE AS NEEDED

THIRD ANGLE
PROJECTION



ALL DIMS IN

mm

Edmund Optics®

TITLE

675nm 50mm Diameter, OD 4 Shortpass Filter

DWG NO

84726

SHEET
1 OF 1