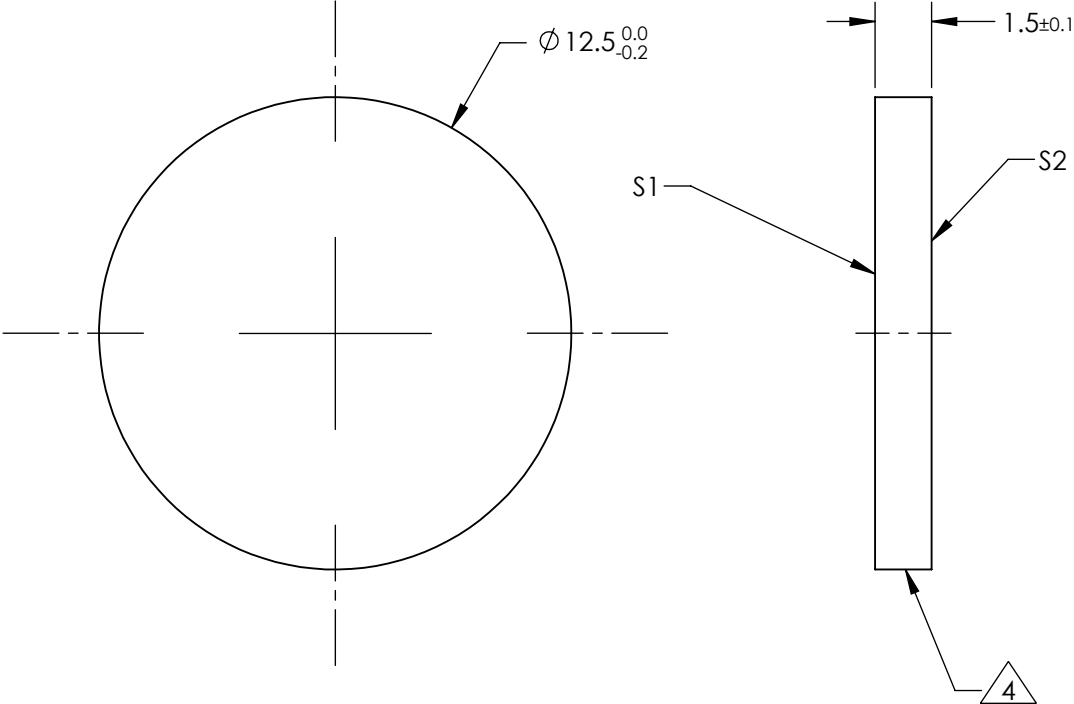


NOTES:

- 1. SUBSTRATE:
UV GRADE FUSED SILICA
- 2. SURFACE S2 TO BE PARALLEL TO SURFACE S1 WITHIN 5 arcsec.
- 3. OPTICAL DENSITY:
0.3±0.03 FROM 190nm TO 1700nm

4. FINE GROUND SURFACE



**FOR INFORMATION ONLY:
DO NOT MANUFACTURE
PARTS TO THIS DRAWING**

SPECIFICATIONS SUBJECT TO CHANGE WITHOUT NOTICE
DIMENSIONS ARE FOR REFERENCE ONLY

	S1	S2	<div><div></div><div>Edmund Optics®</div><div>TITLE0.3 Optical Density 12.5mm Dia UV-NIR ND Filter</div><div>DWG NO88264</div><div>SHEET1 OF 1</div></div>			
SHAPE	PLANO	PLANO				
SURFACE ACCURACY AT 632.8nm (P-V)	1/4 WAVE	1/4 WAVE				
SURFACE QUALITY	40 - 20	40 - 20				
MIN CLEAR APERTURE	Ø 10.0	Ø 10.0				
BEVEL MAX FACE	0.5mm x 45°	0.5mm x 45°	ALL DIMS IN	mm		