

NOTES:

1. ALLOWABLE OPTICAL MATERIAL:

Fused Silica

2. SURFACE S2 TO BE PARALLEL WITH SURFACE S1 TO <3 ARCMIN

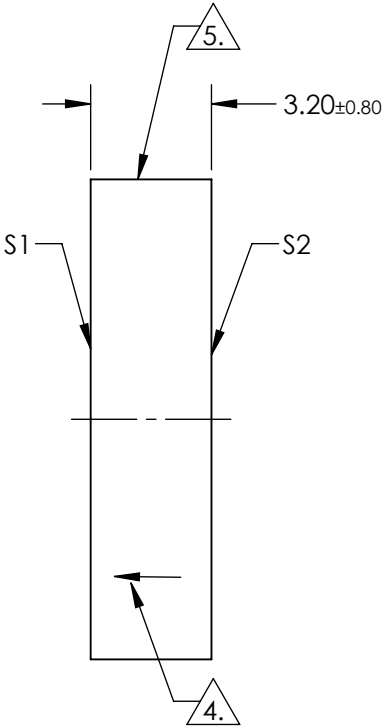
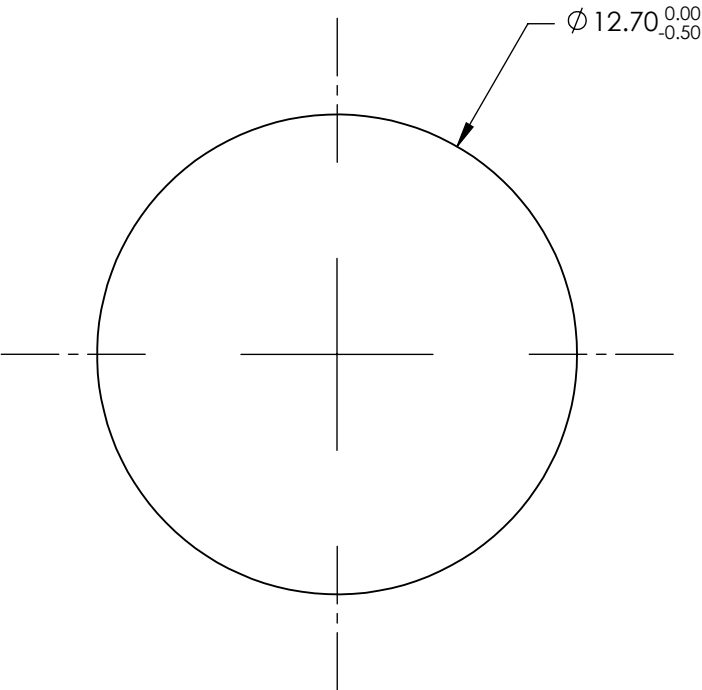
3. COATING (APPLY ACROSS CLEAR APERTURE)

S1: R(AVG) >95% @ 450 - 650nm

S2: NONE


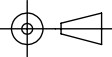
4. ARROW ON EDGE POINTING TOWARD SURFACE S1.

5. FINE GROUND SURFACE



**FOR INFORMATION ONLY:
DO NOT MANUFACTURE
PARTS TO THIS DRAWING**

SPECIFICATIONS SUBJECT TO CHANGE WITHOUT NOTICE
DIMENSIONS ARE FOR REFERENCE ONLY

	S1	S2	 Edmund Optics®			
SHAPE	PLANO	PLANO				
SURFACE ACCURACY AT 632.8	1/10 WAVE	NA				
SURFACE QUALITY	60-40	COMMERCIAL POLISH	TITLE			
CLEAR APERTURE	Ø 11.43	Ø 11.43				
BEVEL MAX FACE	0.5 x 45°	0.5 x 45°	ALL DIMS IN	mm	DWG NO	43-319-533
					SHEET 1 OF 1	