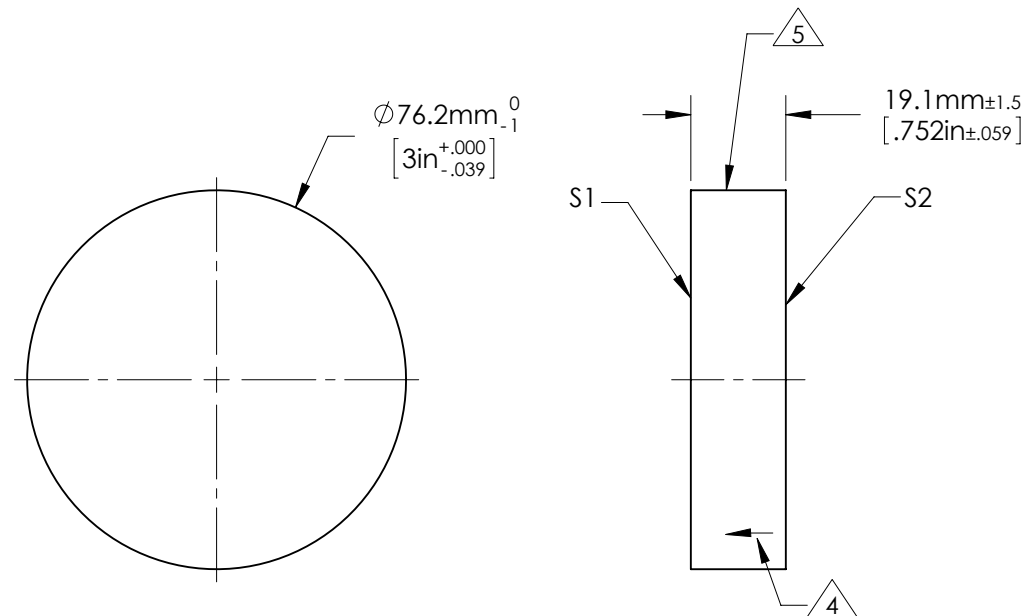


NOTES:


- 1. ALLOWABLE OPTICAL MATERIAL:
SCHOTT: Fused Silica 458/678
- 2. SURFACE S2 TO BE PARALLEL WITH SURFACE S1 TO < 3 ARCMIN
- 3. COATING (APPLY ACROSS COATING APERTURE)

S1: PROTECTED SILVER
Ravg >98% 500-800nm @ 0° AOI
Ravg >97% 2,000-10,000nm @ 0° AOI

- S2: NONE
- 4. ARROW ON EDGE POINTING TOWARDS SURFACE S1.
- 5. FINE GROUND SURFACE



FOR INFORMATION ONLY:
DO NOT MANUFACTURE PARTS TO THIS DRAWING

| | S1 | S2 | EFL (AT 587.6nm) | NA |  Edmund Optics® | |
|-----------------------------|-----------|-------------------|---------------------|----|--|--|
| SHAPE | PLANO | PLANO | | | | |
| SURFACE ACCURACY AT 632.8nm | 1/10 WAVE | NA | | | TITLE | 1/10λ Optical Flat, Fused Silica, 3inch Diameter PROTECTED SILVER |
| SURFACE QUALITY | 60 - 40 | COMMERCIAL POLISH | BFL (AT 587.6nm) | NA | DWG NO | 01915-577 |
| CLEAR APERTURE | ϕ 68.6 | ϕ 68.6 | | | | |
| BEVEL MAX FACE | 1.0 x 45° | 1.0 x 45° | ALL DIMS IN | mm | | |