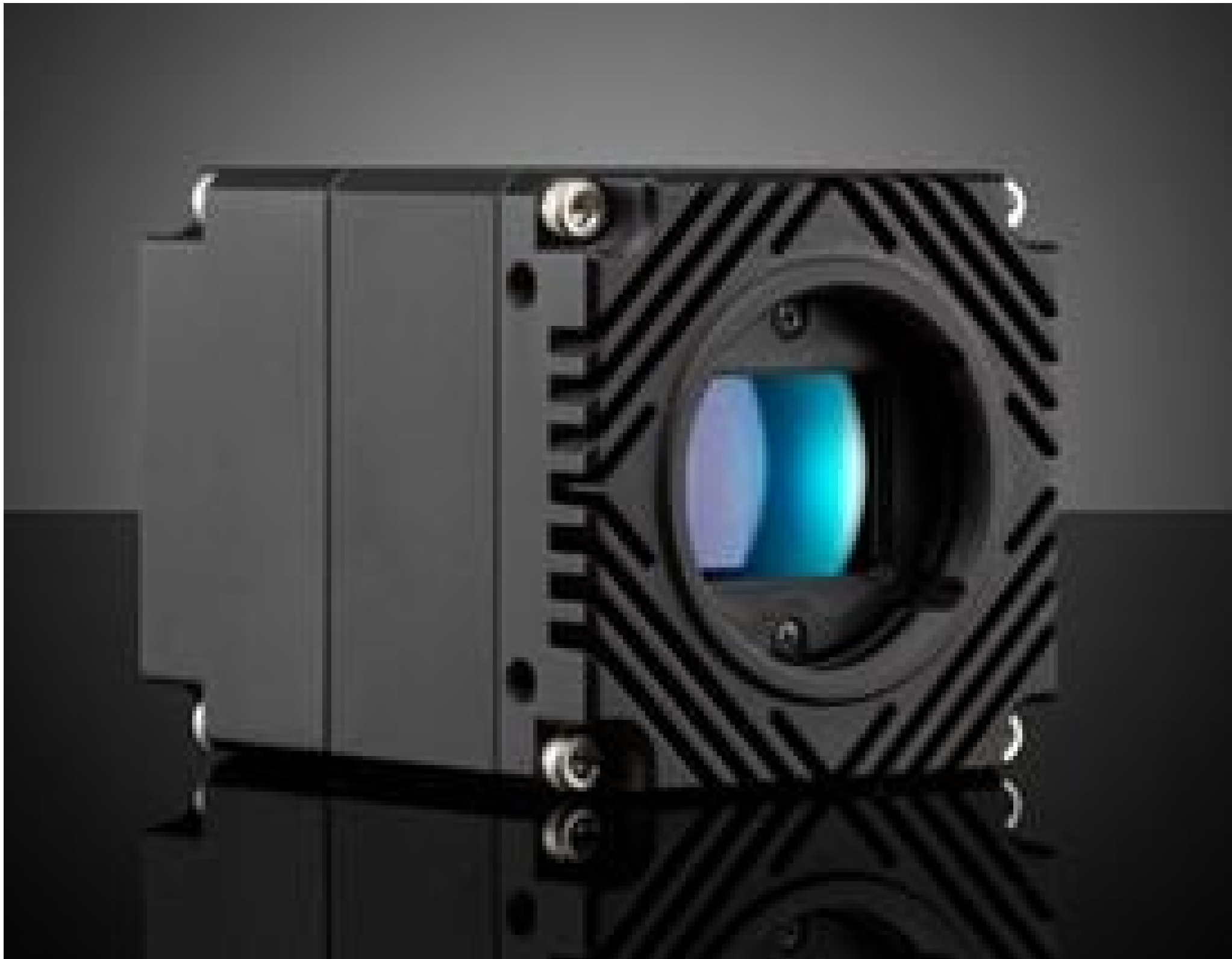


# LUCID Vision Labs Atlas™ ATL196S-CT, Sony IMX367, 19.6MP, Color Camera

See More by [LUCID Vision Labs™](#)



LUCID Vision Labs Atlas™ Power over Ethernet (PoE) 5GBASE-T (5GigE) Cameras

Stock **#13-730** [CONTACT US](#)

- 1 + **£4,207.50**

**ADD TO CART**

Qty 1+

£4,207.50

Volume Pricing

[Request Quote](#)

**!** Prices shown are exclusive of VAT/local taxes

Get Product Downloads

**Video Output:**  
5GigE (PoE)

**Type:**  
Color Camera

**Manufacturer:**  
Lucid Vision Labs

**Mounting Threads:**  
1/4-20 with Tripod Mount Adapter [#13-751](#)

**Image Buffer:**  
380MB

**Camera Family:**  
Atlas™

**Model Number:**  
ATL196S-CT

**Imaging Sensor:**  
Sony IMX367

**Type of Sensor:**  
Progressive Scan CMOS

**Type of Shutter:**  
Global

**Camera Sensor Format:**  
4/3"

**Resolution (MegaPixels):**  
19.60

**Pixels (H x V):**  
4,416 x 4,428

**Pixel Size, H x V (µm):**  
3.45 x 3.45

**Sensing Area, H x V (mm):**  
15.24 x 15.28

**Frame Rate (fps):**  
28.00

**Pixel Depth:**  
8/10/12 bit

**Exposure Time:**  
30µs - 10s

**Connector:**  
5GigE, M12

**Power Supply:**  
Power Supply Required and Sold Separately.  
USA: [#18-364](#)  
Europe: [#18-364](#)  
Japan: [#18-364](#)  
Korea: Not Available  
China: [#18-364](#)

**Power Consumption (W):**  
8 (External Power Supply)  
8.5 (PoE)

**GPIOs:**  
1 opto-isolated input, 1 opto-isolated output, 2 non-isolated bi-directional ports

**Synchronization:**  
Hardware Trigger (GPIO), Software Trigger, or PTP (IEEE 1588)

**Dimensions (mm):**  
55 x 55 x 70 (excludes connectors and lens mount)

**Weight (g):**  
240

**Mount:**  
TFL-Mount

**Housing:**  
Full

**Interface Port Orientation:**  
Back Panel

**Dynamic Range (dB):**  
70.9

**Operating Temperature (°C):**  
-20 to +55

**Storage Temperature (°C):**  
-30 to +60

**GPIO Connector Type:**  
8-pin M8

**Machine Vision Standard:**  
GigE Vision v2.0

## Regulatory Compliance

**RoHS:**  
[Compliant](#)

**Certificate of Conformance:**  
[View](#)